

Anti-GFAP

Rabbit Polyclonal Antibody

Catalog # **G28-563R**

Lot # Z2014-9

Cited Applications

WB, IF

Ideal working dilutions for each application should be empirically determined by the investigator.

Specificity

Recognizes the glial fibrillary acidic protein (GFAP)

Cross Reactivity

Human, Mouse and Rat

Host/Isotype/Clone#

Rabbit, IgG

Immunogen

Recombinant and purified bovine GFAP.

Formulation

100 µl neat serum

Stability

1yr at -20°C from date of shipment

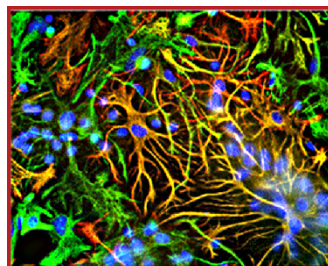
Scientific Background

Glial Fibrillary Acidic Protein (GFAP) was discovered as a major fibrous protein of multiple sclerosis plaques (1). It was subsequently found to be a member of the 10nm or intermediate filament (IF) family, specifically the IF family Class III, which also includes peripherin, desmin and vimentin. GFAP is strongly and specifically expressed in astrocytes and certain other astroglia in the CNS, in satellite cells, peripheral ganglia, and in non-myelinating Schwann cells in peripheral nerves. In many damage and disease states GFAP expression is heavily upregulated in astrocytes. In addition, neural stem cells frequently strongly express GFAP. Point mutations in the protein coding region of the GFAP gene lead to Alexander disease which is characterized by the presence of abnormal astrocytes containing GFAP protein aggregates known as Rosenthal fibers (2).

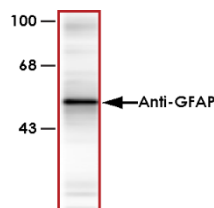
References

1. Bignami A, Eng LF, Dahl D, Uyeda CT. Localization of the glial fibrillary acidic protein in astrocytes by immunofluorescence. Brain Res. 43:429-35 (1972).
2. Brenner M, Johnson AB, Boespflug-Tanguy O, Rodriguez D, Goldman JE and Messing A. Mutations in GFAP, encoding glial fibrillary acidic protein, are associated with Alexander disease. Nat Genet 27:117-20 (2001).

Sample Data



Immunofluorescence showing specific labeling of GFAP (red) and vimentin (green) in cultured neurons and glia. Cells containing GFAP and vimentin appear yellow.



Western blot of rat cortex lysate showing specific immunolabeling of the ~50k GFAP protein.

Anti-GFAP

Rabbit Polyclonal Antibody

Catalog # **G28-563R**

Lot # **Z2014-9**

Purification Affinity chromatography

Stability 1yr at -20°C from date of shipment

Storage & Shipping Store product at -20°C. For optimal storage, aliquot antibody into smaller quantities after centrifugation and store at recommended temperature. For optimal performance, avoid repeated handling and multiple freeze/thaw cycles. Product shipped on ice packs.

To place your order, please contact us by phone 1-(604)-232-4600, fax 1-604-232-4601 or by email: orders@signalchem.com
www.signalchem.com

FOR IN VITRO RESEARCH PURPOSES ONLY. NOT INTENDED FOR USE IN HUMAN OR ANIMALS.