

Anti-Cyclin A

Rabbit Polyclonal Antibody

Catalog # **C78-363R**

Lot # Z2014-5

Cited Applications

WB, ELISA, IP

Ideal working dilutions for each application should be empirically determined by the investigator.

Specificity

Recognizes the Cyclin A protein

Cross Reactivity

Human, Mouse, and Rat

Host/Isotype/Clone#

Rabbit, IgG

Immunogen

Anti-Cyclin A Antibody was produced by repeated immunizations with a recombinant protein corresponding to the human cyclin A.

Formulation

0.01% (w/v) Sodium Azide

Stability

1yr at -20°C from date of shipment

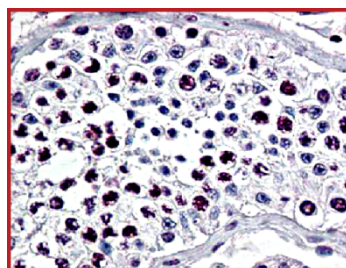
Scientific Background

Anti-Cyclin A detects cyclin a. Cyclin A is a member of the cyclin family. Cyclin A binds to S phase CDK2 and is required for the cell to progress through the S phase. CDK2/Cyclin A is inhibited by the complex p21CIP. The Anti-Cyclin-A antibody is ideal for investigators involved in cell signaling, cell biology and signal transduction research.

References

1. Rizzolio F, Lucchetti C, et al, Retinoblastoma tumor-suppressor protein phosphorylation and inactivation depend on direct interaction with Pin1. Cell Death and Differentiation 1-10. Nature 2012.

Sample Data



Immunohistochemistry using Rabbit Anti-Cyclin A antibody. Tissue: human testes tissue. Fixation: formalin fixed paraffin embedded. Antigen retrieval: not required. Primary antibody: Anti-Cyclin A at 1:500 for 1 hr at RT. Localization: Cyclin A is nuclear and cytoplasmic. Staining: Cyclin A as precipitated red signal with hematoxylin purple nuclear counterstain.



Western Blot of Rabbit Anti-Cyclin A antibody. Lane 1: T98G cells treated with normal (n). Lane 2: T98G cells treated with scrambled (scr). Lane 3: T98G cells treated with PIN1 knockdown (kd1). Load: 25 µg per lane. Primary antibody: Anti-Cyclin A at 1:400 for overnight at 4°C. Predicted/Observed size: 60kDa for Cyclin A.

Anti-Cyclin A

Rabbit Polyclonal Antibody

Catalog #	C78-363R
Lot #	Z2014-5
Purification	Affinity chromatography
Stability	1yr at -20°C from date of shipment
Storage & Shipping	Store product at -20°C. For optimal storage, aliquot antibody into smaller quantities after centrifugation and store at recommended temperature. For optimal performance, avoid repeated handling and multiple freeze/thaw cycles. Product shipped on ice packs.