

Anti-phospho-Src (Tyr529)

Rabbit Polyclonal Antibody

Catalog # S19-65BR

Lot # Z2014-45

Cited Applications

WB, IHC

Ideal working dilutions for each application should be empirically determined by the investigator.

Specificity

Recognizes the Src protein phosphorylated at tyrosine 529

Cross Reactivity

Human, Mouse and Rat

Host/Isotype/Clone#

Rabbit, IgG

Immunogen

The antiserum was produced against synthesized non-phosphopeptide derived from human Src around the phosphorylation site of tyrosine 529 (P-Q-YP-Q-P).

Formulation

Phosphate buffered saline (without Mg²⁺ and Ca²⁺), pH 7.4, 150mM NaCl, 0.02% sodium azide and 50% glycerol.

Stability

1yr at -20°C from date of shipment

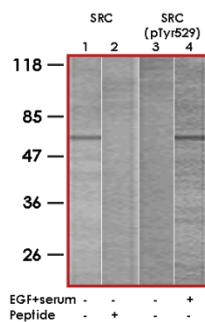
Scientific Background

SRC family belongs to non-receptor tyrosine kinases. SRC was originally identified as a transforming protein of the Rous sarcoma virus (RSV) that had enzymatic ability to phosphorylate tyrosine in protein substrates (1). SRC is overexpressed and activated in a large number of human malignancies and has been linked to the development of cancer and progression to distant metastases (2). In addition to increasing cell proliferation, a key role of SRC in cancer seems to be the ability to promote invasion and motility, functions that might contribute to tumour progression.

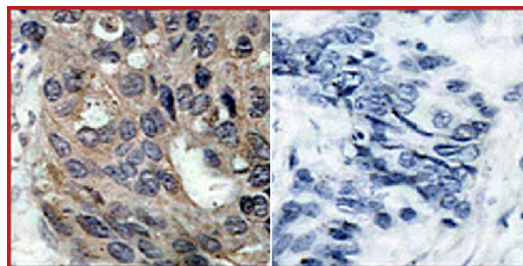
References

- Collett, M S. et al: Protein kinase activity associated with the avian sarcoma virus src gene product. Proc Natl Acad Sci U S A. 1978 Apr;75(4):2021-4.
- Jacobs, C. et al: Expression of pp60c-src protein kinase in adult and fetal human tissue: high activities in some sarcomas and mammary carcinomas. Cancer Res. 1983 Apr;43(4):1696-702.
- Pyper J.M., (1985) Mol. Cell. Biol. 5:831-838 Pyper J.M.(1990) Mol. Cell. Biol. 10:2035-2040 Xu W., (1997).Nature 385:595-602 Benes C.H., (2005) Cell 121:271-280.

Sample Data



Western Blot analysis of extracts from 293 cells using Anti-Src (Lane 1 and 2) and Anti-phospho-Src (Tyr529) (Lane 3 and 4).



Immunohistochemical analysis of paraffin-embedded human breast carcinoma tissue using Anti-phospho-Src (Tyr529).

Anti-phospho-Src (Tyr529)

Rabbit Polyclonal Antibody

Catalog # **S19-65BR**
Lot # **Z2014-45**
Purification **Affinity chromatography**
Stability **1yr at -20°C from date of shipment**
Storage & Shipping **Store product at -20°C. For optimal storage, aliquot antibody into smaller quantities after centrifugation and store at recommended temperature. For optimal performance, avoid repeated handling and multiple freeze/thaw cycles. Product shipped on ice packs.**

To place your order, please contact us by phone 1-(604)-232-4600, fax 1-604-232-4601 or by email: orders@signalchem.com
www.signalchem.com

FOR IN VITRO RESEARCH PURPOSES ONLY. NOT INTENDED FOR USE IN HUMAN OR ANIMALS.