

## Anti-phospho-c-KIT (Tyr936)

Rabbit Polyclonal Antibody

Catalog # **K06-65BR**

Lot # Z2014-34

### Cited Applications

IHC

Ideal working dilutions for each application should be empirically determined by the investigator.

### Specificity

Recognizes the c-KIT protein phosphorylated at tyrosine 936

### Cross Reactivity

Human

### Host/Isotype/Clone#

Rabbit, IgG

### Immunogen

The antibody was produced against synthesized phosphopeptide derived from human c-KIT around the phosphorylation site of tyrosine 936 (H-I-Y-P-S-N).

### Formulation

Phosphate buffered saline (without Mg<sup>2+</sup> and Ca<sup>2+</sup>), pH 7.4, 150mM NaCl, 0.02% sodium azide and 50% glycerol.

### Stability

1yr at -20°C from date of shipment

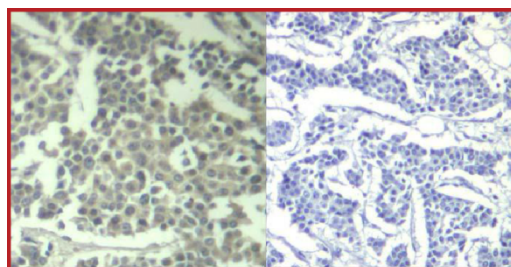
### Scientific Background

c-KIT is a proto-oncogene and a type 3 transmembrane receptor for MGF (mast cell growth factor, also known as stem cell factor). c-KIT was first identified as the cellular homolog of the feline sarcoma viral oncogene v-kit. c-KIT together with its ligand regulates growth and activation of a variety of hematopoietic and non-hematopoietic cells. Mutations in c-KIT are associated with gastrointestinal stromal tumors, mast cell disease, acute myelogenous leukemia, and piebaldism. Recently, deregulation of the KIT receptor TK by the prevalent activation loop mutation D816V has served as a focal point in therapeutic strategies aimed curbing neoplastic mast cell growth (2).

### References

- Berger, S A.: Signaling pathways influencing SLF and c-kit-mediated survival and proliferation. Immunol Res. 2006;35(1-2):1-12.
- Gottlieb, J.: KIT mutations in mastocytosis and their potential as therapeutic targets. Immunol Allergy Clin North Am. 2006 Aug;26(3):575-92.

### Sample Data



Immunohistochemical analysis of paraffin-embedded human breast carcinoma tissue using Anti-phospho-c-KIT (Tyr936)

## Anti-phospho-c-KIT (Tyr936)

Rabbit Polyclonal Antibody

Catalog # **K06-65BR**

Lot # **Z2014-34**

Purification

Affinity chromatography

Stability

1yr at -20°C from date of shipment

Storage & Shipping

Store product at -20°C. For optimal storage, aliquot antibody into smaller quantities after centrifugation and store at recommended temperature. For optimal performance, avoid repeated handling and multiple freeze/thaw cycles. Product shipped on ice packs.

To place your order, please contact us by phone 1-(604)-232-4600, fax 1-604-232-4601 or by email: [orders@signalchem.com](mailto:orders@signalchem.com)  
[www.signalchem.com](http://www.signalchem.com)

**FOR IN VITRO RESEARCH PURPOSES ONLY. NOT INTENDED FOR USE IN HUMAN OR ANIMALS.**