

## Anti-phospho-Histone H3.1 (Ser10)

Rabbit Polyclonal Antibody

Catalog # **H12-565R**

Lot # Z2014-24

### Cited Applications

WB, IHC

Ideal working dilutions for each application should be empirically determined by the investigator.

### Specificity

Recognizes the Histone H3.1 protein phosphorylated at serine 10

### Cross Reactivity

Human, Mouse and Rat

### Host/Isotype/Clone#

Rabbit, IgG

### Immunogen

The antiserum was produced against synthesized phosphopeptide derived from human Histone H3.1 around the phosphorylation site of serine 10 (R-K-SP-T-G).

### Formulation

Phosphate buffered saline (without Mg<sup>2+</sup> and Ca<sup>2+</sup>), pH 7.4, 150mM NaCl, 0.02% sodium azide and 50% glycerol.

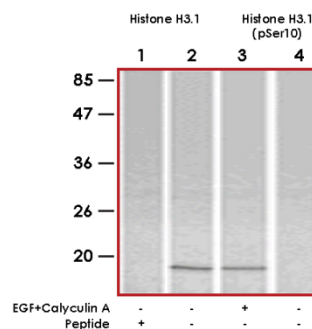
### Stability

1yr at -20°C from date of shipment

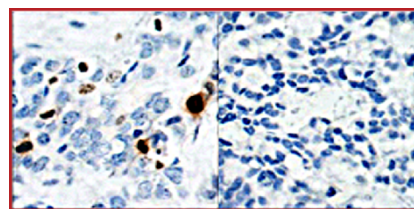
### References:

- Dai J, et al. (2005) *Genes Dev* 19(4): 472-488. Yih LH, et al. (2005) *Carcinogenesis* 26(1): 53-63.

### Sample Data



Western blot analysis of extract from HeLa cells using Histone H3.1 antibody (Lane 1 and 2) and Anti-phospho-Histone H3.1 (Ser10) (Lane 3 and 4).



Immunohistochemical analysis of paraffin-embedded human breast carcinoma tissue using Anti-phospho-Histone H3.1 (Ser10).

## Anti-phospho-Histone H3.1 (Ser10)

Rabbit Polyclonal Antibody

Catalog #	H12-565R
Lot #	Z2014-24
Purification	Affinity chromatography
Stability	1yr at -20°C from date of shipment
Storage & Shipping	Store product at -20°C. For optimal storage, aliquot antibody into smaller quantities after centrifugation and store at recommended temperature. For optimal performance, avoid repeated handling and multiple freeze/thaw cycles. Product shipped on ice packs.

To place your order, please contact us by phone 1-(604)-232-4600, fax 1-604-232-4601 or by email: [orders@signalchem.com](mailto:orders@signalchem.com)  
[www.signalchem.com](http://www.signalchem.com)

**FOR IN VITRO RESEARCH PURPOSES ONLY. NOT INTENDED FOR USE IN HUMAN OR ANIMALS.**