

Anti-NOTCH 2

Rabbit Polyclonal Antibody

Catalog # **N42-363R**

Lot # Z2014-19

Cited Applications

WB, ELISA, IHC

Ideal working dilutions for each application should be empirically determined by the investigator.

Specificity

Recognizes the NOTCH 2 protein

Cross Reactivity

Human

Host/Isotype/Clone#

Rabbit, IgG

Immunogen

This whole rabbit serum was prepared by repeated immunizations with a synthetic peptide corresponding to amino acid residues of human NOTCH 2 located near the N-terminal sequence of the cleaved intracellular domain (NICD).

Formulation

0.02 M Potassium Phosphate, 0.15 M Sodium Chloride, pH 7.2
0.01% (w/v) Sodium Azide

Stability

1yr at -20°C from date of shipment

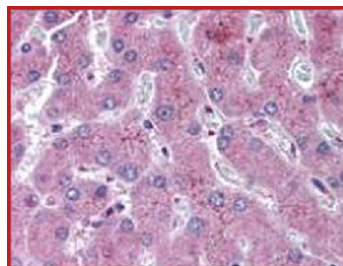
Scientific Background

The Anti-NOTCH 2 antibody recognizes NOTCH 2 that is synthesized in the endoplasmic reticulum as an inactive form which is proteolytically cleaved by a furin-like convertase (S1 cleavage) in the trans-golgi network before it reaches the plasma membrane to yield an active, ligand-accessible form. Cleavage results in a C-terminal fragment N(TM) and a N-terminal fragment N(EC). Following ligand binding, it is cleaved (S2 cleavage) by TNF-alpha converting enzyme (TACE) to yield a membrane-associated intermediate fragment called NOTCH extracellular truncation (NEXT). This fragment is then cleaved by presenilin-dependent gamma-secretase (S3 cleavage) to release the intracellular domain (NICD) from the membrane.

References

- Bertrand FE, Eckfeldt CE, Lysholm AS, LeBien TW, Notch-1 and Notch-2 exhibit unique patterns of expression in human B-lineage cells. *Leukemia*. 12: 2095-102. 2000.
- Gridley T, Notch signaling and inherited disease syndromes. *Hum. Mol. Genet.*: 12, Suppl 1, R9-R13. 2003.

Sample Data



Anti-NOTCH 2 was diluted 1:500 to detect NOTCH 2 in human liver tissue. Tissue was formalin fixed and paraffin embedded. No pre-treatment of sample was required. The image shows the localization of antibody as the precipitated red signal, with a hematoxylin purple nuclear counter stain.

Anti-NOTCH 2

Rabbit Polyclonal Antibody

Catalog #	N42-363R
Lot #	Z2014-19
Purification	Affinity chromatography
Stability	1yr at -20°C from date of shipment
Storage & Shipping	Store product at -20°C. For optimal storage, aliquot antibody into smaller quantities after centrifugation and store at recommended temperature. For optimal performance, avoid repeated handling and multiple freeze/thaw cycles. Product shipped on ice packs.

To place your order, please contact us by phone 1-(604)-232-4600, fax 1-604-232-4601 or by email: orders@signalchem.com
www.signalchem.com

FOR IN VITRO RESEARCH PURPOSES ONLY. NOT INTENDED FOR USE IN HUMAN OR ANIMALS.