

## JAK2, Active

Recombinant human protein expressed in Sf9 cells

**Catalog # J02-11G**

Lot # Y959-1

### Product Description

Recombinant human JAK2 (804-end) was expressed by baculovirus in Sf9 insect cells using an N-terminal GST tag. The gene accession number is [NM\\_004972](#).

### Gene Aliases

(None)

### Formulation

Recombinant protein stored in 50mM Tris-HCl, pH 7.5, 150mM NaCl, 10mM glutathione, 0.1mM EDTA, 0.25mM DTT, 0.1mM PMSF, 25% glycerol.

### Storage and Stability

Store product at -70°C. For optimal storage, aliquot target into smaller quantities after centrifugation and store at recommended temperature. For most favorable performance, avoid repeated handling and multiple freeze/thaw cycles.

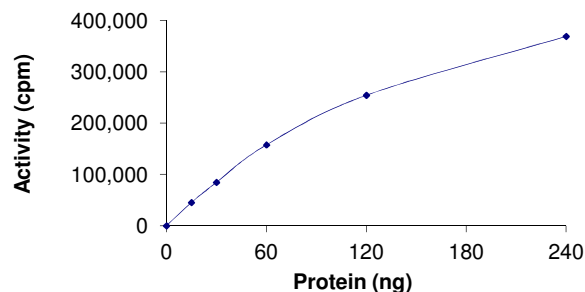
### Scientific Background

JAK2 is a member of intracellular non-receptor tyrosine kinases that transduce cytokine-mediated signals via the JAK-STAT pathway (1). JAK2 has two near-identical phosphate-transferring domains. One domain exhibits the kinase activity while the other stabilizes the JAK conformational structure. JAK2 is the predominant JAK kinase activated in response to several growth factors and cytokines such as IL-3, GM-CSF and erythropoietin. JAK2 has been found to be constitutively associated with the prolactin receptor and is required for responses to gamma interferon (2).

### References

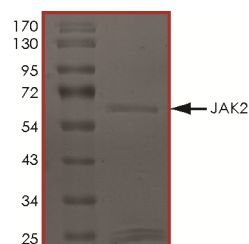
1. Lacronique, V. Et al: A TEL-JAK2 fusion protein with constitutive kinase activity in human leukemia. *Science*, 1997; 278: 1309-1312.
2. Ho, J.M. et al: TEL-JAK2 constitutively activates the extracellular signal-regulated kinase (ERK), stress-activated protein/Jun kinase (SAPK/JNK), and p38 signaling pathways. *Blood*, 2002; 100: 1438-1448.

### Specific Activity



The specific activity of JAK2 was determined to be **145 nmol /min/mg** as per activity assay protocol.

### Purity



The purity of JAK2 was determined to be **>70%** by densitometry. JAK2 Approx. MW **63kDa**.

## JAK2, Active

Recombinant human protein expressed in Sf9 cells

Catalog #	J02-11G
Specific Activity	145 nmol/min/mg
Lot #	Y959-1
Purity	>70%
Concentration	0.1 µg/µl
Stability	1yr at -70°C from date of shipment
Storage & Shipping	Store product at -70°C. For optimal storage, aliquot target into smaller quantities after centrifugation and store at recommended temperature. For most favorable performance, avoid repeated handling and multiple freeze/thaw cycles. Product shipped on dry ice.

To place your order, please contact us by phone 1-(604)-232-4600, fax 1-604-232-4601 or by email: [orders@signalchem.com](mailto:orders@signalchem.com)  
[www.signalchem.com](http://www.signalchem.com)

**FOR IN VITRO RESEARCH PURPOSES ONLY. NOT INTENDED FOR USE IN HUMAN OR ANIMALS.**

"THIS PRODUCT SHALL NOT BE USED TO COMMERCIALY SCREEN DRUG MOLECULES DEVELOPED AS JAK1 OR JAK2 INHIBITORS. ANY SUCH ACTIVITY WILL BE OUTSIDE THE SCOPE OF THE RESEARCH USE ONLY LABEL LICENCE" THE PRODUCT IS PROTECTED BY THE FOLLOWING PATENTS: US5,910,426; US5,852,184; US5,821,069; US5,716,818,US5,658,791

# Activity Assay Protocol

## Reaction Components

### Active Kinase (Catalog #: J02-11G)

Active JAK2 (0.1µg/µl) diluted with Kinase Dilution Buffer III (Catalog #: K23-09) and assayed as outlined in sample activity plot. (Note: these are suggested working dilutions and it is recommended that the researcher perform a serial dilution of Active JAK2 for optimal results).

### Kinase Dilution Buffer III (Catalog #: K23-09)

Kinase Assay Buffer I (Catalog #: K01-09) diluted at a 1:4 ratio (5X dilution) with 50 ng/µl BSA solution.

### Kinase Assay Buffer I (Catalog #: K01-09)

Buffer components: 25mM MOPS pH 7.2, 12.5mM β-glycerol-phosphate, 25mM MgCl<sub>2</sub>, 5mM EGTA, 2mM EDTA. Add 0.25mM DTT to Kinase Assay Buffer prior to use.

### [<sup>33</sup>P]-ATP Assay Cocktail

Prepare 250µM [<sup>33</sup>P]-ATP Assay Cocktail in a designated radioactive working area by adding the following components: 150µl of 10mM ATP Stock Solution (Catalog #: A50-09), 100µl [<sup>33</sup>P]-ATP (1mCi/100µl), 5.75ml of Kinase Assay Buffer I (Catalog #: K01-09). Store 1ml aliquots at -20°C.

### 10mM ATP Stock Solution (Catalog #: A50-09)

Prepare ATP stock solution by dissolving 55mg of ATP in 10ml of Kinase Assay Buffer I (Catalog #: K01-09). Store 200µl aliquots at -20°C.

### Substrate (Catalog #: I15-58)

IGF1Rtide synthetic peptide substrate (KKKSPGEYVNIIEFG) diluted in distilled H<sub>2</sub>O to a final concentration of 1mg/ml.

## Assay Protocol

- Step 1.** Thaw [<sup>33</sup>P]-ATP Assay Cocktail in shielded container in a designated radioactive working area.
- Step 2.** Thaw the Active JAK2, Kinase Assay Buffer, Substrate and Kinase Dilution Buffer on ice.
- Step 3.** In a pre-cooled microfuge tube, add the following reaction components bringing the initial reaction volume up to 20µl:
  - Component 1.** 10µl of diluted Active JAK2 (Catalog #J02-11G)
  - Component 2.** 5µl of 1mg/ml stock solution of substrate (Catalog #I15-58)
  - Component 3.** 5µl distilled H<sub>2</sub>O (4°C)
- Step 4.** Set up the blank control as outlined in step 3, excluding the addition of the substrate. Replace the substrate with an equal volume of distilled H<sub>2</sub>O.
- Step 5.** Initiate the reaction by the addition of 5µl [<sup>33</sup>P]-ATP Assay Cocktail bringing the final volume up to 25µl and incubate the mixture in a water bath at 30°C for 15 minutes.
- Step 6.** After the 15 minute incubation period, terminate the reaction by spotting 20µl of the reaction mixture onto individual pre-cut strips of phosphocellulose P81 paper.
- Step 7.** Air dry the pre-cut P81 strip and sequentially wash in a 1% phosphoric acid solution (dilute 10ml of phosphoric acid and make a 1L solution with distilled H<sub>2</sub>O) with constant gentle stirring. It is recommended that the strips be washed a total of 3 intervals for approximately 10 minutes each.
- Step 8.** Count the radioactivity on the P81 paper in the presence of scintillation fluid in a scintillation counter.
- Step 9.** Determine the corrected cpm by removing the blank control value (see Step 4) for each sample and calculate the kinase specific activity as outlined below.

### Calculation of [<sup>33</sup>P]-ATP Specific Activity (SA) (cpm/pmol)

Specific activity (SA) = cpm for 5µl [<sup>33</sup>P]-ATP / pmoles of ATP (in 5µl of a 250µM ATP stock solution, i.e., 1250 pmoles)

### Kinase Specific Activity (SA) (pmol/min/µg or nmol/min/mg)

Corrected cpm from reaction / [(SA of <sup>33</sup>P-ATP in cpm/pmol)\*(Reaction time in min)\*(Enzyme amount in µg or mg)]\*[(Reaction Volume) / (Spot Volume)]

To place your order, please contact us by phone 1-(604)-232-4600, fax 1-604-232-4601 or by email: [orders@signalchem.com](mailto:orders@signalchem.com)  
[www.signalchem.com](http://www.signalchem.com)

**FOR IN VITRO RESEARCH PURPOSES ONLY. NOT INTENDED FOR USE IN HUMAN OR ANIMALS.**

**"THIS PRODUCT SHALL NOT BE USED TO COMMERCIALY SCREEN DRUG MOLECULES DEVELOPED AS JAK1 OR JAK2 INHIBITORS. ANY SUCH ACTIVITY WILL BE OUTSIDE THE SCOPE OF THE RESEARCH USE ONLY LABEL LICENCE" THE PRODUCT IS PROTECTED BY THE FOLLOWING PATENTS: US5,910,426; US5,852,184; US5,821,069; US5,716,818,US5,658,791**