

## LMTK3 Protein

Recombinant protein expressed in Sf9 cells

**Catalog # L08-35G**

Lot # Y899-2

### Product Description

Recombinant mouse LMTK3 (63-484) was expressed by baculovirus in Sf9 insect cells using an N-terminal GST tag. The gene accession number is [NM\\_001005511](#).

### Gene Aliases

AATYK3; MGC90743

### Formulation

Recombinant protein stored in 50mM Tris-HCl, pH 7.5, 50mM NaCl, 10mM glutathione, 0.1mM EDTA, 0.25mM DTT, 0.1mM PMSF, 25% glycerol.

### Storage and Stability

Store product at -70°C. For optimal storage, aliquot target into smaller quantities after centrifugation and store at recommended temperature. For most favorable performance, avoid repeated handling and multiple freeze/thaw cycles.

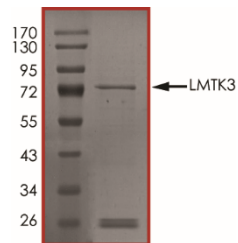
### Scientific Background

LMTK3, or Lemur tyrosine kinase 3, belongs to the LMR subfamily of tyr protein kinases. LMTK3 decreases the activity of protein kinase C (PKC) and also leads to phosphorylation of AKT (Ser473), thereby increasing binding of forkhead box O3 (FOXO3) to the ESR1 promoter. LMTK3 phosphorylates ER $\alpha$ , protecting it from proteasomal degradation in vitro. Knockdown of LMTK3 leads to a reduction of tumor volume in an orthotopic mouse model and abrogates proliferation of ER $\alpha$ + but not ER $\alpha$ - cells, indicative of its role in ER $\alpha$  activity. These findings reveal LMTK3 as a new therapeutic target for breast cancer (1).

### References

1. Giamas G et al: Kinome screening for regulators of the estrogen receptor identifies LMTK3 as a new therapeutic target in breast cancer. Nat Med. 2011 Jun;17(6):715-9.

### Purity



The purity was determined to be **>70%** by densitometry. Approx. MW **75 kDa**.

## LMTK3 Protein

Recombinant protein expressed in Sf9 cells

Catalog #	L08-35G
Lot #	Y899-2
Purity	>70%
Concentration	0.1 µg/µl
Stability	1yr at -70°C from date of shipment
Storage & Shipping	Store product at -70°C. For optimal storage, aliquot target into smaller quantities after centrifugation and store at recommended temperature. For most favorable performance, avoid repeated handling and multiple freeze/thaw cycles. Product shipped on dry ice.