

TRIB1 Protein

Recombinant full-length human protein expressed in Sf9 cells

Catalog # T30-30G

Lot # Y862-2

Product Description

Recombinant full-length human TRIB1 was expressed by baculovirus in Sf9 insect cells using an N-terminal GST tag. The TRIB1 gene accession number is [NM_025195](#).

Gene Aliases

C8FW; GIG2; SKIP1; TRB1

Formulation

Recombinant protein stored in 50mM Tris-HCl, pH 7.5, 150mM NaCl, 10mM glutathione, 0.1mM EDTA, 0.25mM DTT, 0.1mM PMSF, 25% glycerol.

Storage and Stability

Store product at -70°C. For optimal storage, aliquot target into smaller quantities after centrifugation and store at recommended temperature. For most favorable performance, avoid repeated handling and multiple freeze/thaw cycles.

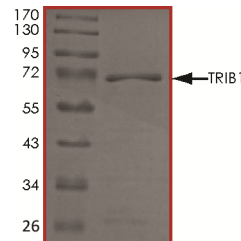
Scientific Background

TRIB1 or tribbles homolog 1 protein encodes one of three members of the Tribbles family that share a Trb domain, which is homologous to protein serine-threonine kinases, but lacks the active site lysine and probably lacks a catalytic function. TRIB1 is highly expressed in skeletal muscle, thyroid, pancreas, peripheral blood leukocytes, and bone marrow. The overexpression of TRIB1 may be functionally important consequence of 8q24 amplicons in AML and MDS (1). TRIB1 is a p65-interacting negative regulator of NF-kappa-B-dependent transcription (2).

References

1. Storlazzi, C. T.et.al: Identification of a commonly amplified 4.3 Mb region with overexpression of C8FW, but not MYC in MYC-containing double minutes in myeloid malignancies. Hum. Molec. Genet. 13: 1479-1485, 2004.
2. Wu, M. et.al: SINK is a p65-interacting negative regulator of NF-kappa-B-dependent transcription. J. Biol. Chem. 278: 27072-27079, 2003.

Purity



The purity of TRIB1 was determined to be **>95%** by densitometry, approx. MW **70kDa**.

TRIB1 Protein

Recombinant full-length human protein expressed in Sf9 cells

Catalog #	T30-30G
Lot #	Y862-2
Purity	>95%
Concentration	0.1 µg/µl
Stability	1yr at -70°C from date of shipment
Storage & Shipping	Store product at -70°C. For optimal storage, aliquot target into smaller quantities after centrifugation and store at recommended temperature. For most favorable performance, avoid repeated handling and multiple freeze/thaw cycles. Product shipped on dry ice.

To place your order, please contact us by phone 1-(604)-232-4600, fax 1-604-232-4601 or by email: orders@signalchem.com
www.signalchem.com

FOR IN VITRO RESEARCH PURPOSES ONLY. NOT INTENDED FOR USE IN HUMAN OR ANIMALS.