

LMTK3 Protein

Recombinant protein expressed in Sf9 cells

Catalog # L08-35G

Lot # Y1092-1

Product Description

Recombinant mouse LMTK3 (63-484) was expressed by baculovirus in Sf9 insect cells using an N-terminal GST tag. The gene accession number is [NM_001005511](#).

Gene Aliases

AATYK3; MGC90743

Formulation

Recombinant protein stored in 50mM Tris-HCl, pH 7.5, 50mM NaCl, 10mM glutathione, 0.1mM EDTA, 0.25mM DTT, 0.1mM PMSF, 25% glycerol.

Storage and Stability

Store product at -70°C. For optimal storage, aliquot target into smaller quantities after centrifugation and store at recommended temperature. For most favorable performance, avoid repeated handling and multiple freeze/thaw cycles.

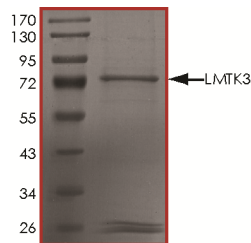
Scientific Background

LMTK3, or Lemur tyrosine kinase 3, belongs to the LMR subfamily of tyr protein kinases. LMTK3 decreases the activity of protein kinase C (PKC) and also leads to phosphorylation of AKT (Ser473), thereby increasing binding of forkhead box O3 (FOXO3) to the ESR1 promoter. LMTK3 phosphorylates ER α , protecting it from proteasomal degradation in vitro. Knockdown of LMTK3 leads to a reduction of tumor volume in an orthotopic mouse model and abrogates proliferation of ER α + but not ER α - cells, indicative of its role in ER α activity. These findings reveal LMTK3 as a new therapeutic target for breast cancer (1).

References

1. Giamas G et al: Kinome screening for regulators of the estrogen receptor identifies LMTK3 as a new therapeutic target in breast cancer. Nat Med. 2011 Jun;17(6):715-9.

Purity



The purity of LMTK3 was determined to be **>80%** by densitometry. Approx. MW **75 kDa**.

LMTK3 Protein

Recombinant protein expressed in Sf9 cells

| | |
|--------------------|---|
| Catalog # | L08-35G |
| Lot # | Y1092-1 |
| Purity | >80% |
| Concentration | 0.1 µg/µl |
| Stability | 1yr at -70°C from date of shipment |
| Storage & Shipping | Store product at -70°C. For optimal storage, aliquot target into smaller quantities after centrifugation and store at recommended temperature. For most favorable performance, avoid repeated handling and multiple freeze/thaw cycles. Product shipped on dry ice. |

To place your order, please contact us by phone 1-(604)-232-4600, fax 1-604-232-4601 or by email: orders@signalchem.com
www.signalchem.com

FOR IN VITRO RESEARCH PURPOSES ONLY. NOT INTENDED FOR USE IN HUMAN OR ANIMALS.