

HTRA2 Protein

Recombinant human protein expressed in E. coli cells

Catalog # H532-31H

Lot # Y1091-5

Product Description

Recombinant human HTRA2 (133-358) protein was expressed in E. coli cells using an N-terminal His-tag. The protein accession number is [NM_013247](#).

Gene Aliases

OMI; PARK13; PRSS25

Formulation

Recombinant protein stored in 50mM Tris-HCl, pH 8.0, 300mM NaCl, 150mM imidazole and 10% glycerol.

Storage and Stability

Store product at -70°C . For optimal storage, aliquot target into smaller quantities after centrifugation and store at recommended temperature. For most favorable performance, avoid repeated handling and multiple freeze/thaw cycles.

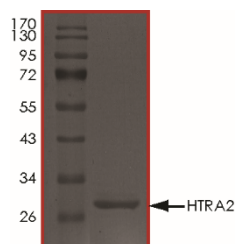
Scientific Background

High temperature requirement protein A2 (HTRA2) is a serine protease that normally resides in mitochondrial membranes and plays a key role in the apoptosis pathways in different pathological conditions including myocardial ischemia/reperfusion injury. Heart ischemia/reperfusion induced HTRA2 translocation from the mitochondria to the cytosol promotes cardiomyocyte apoptosis via a protease activity-dependent and caspase-mediated pathway.

References

1. Suzuki Y, et al: Mitochondrial protease Omi/HtrA2 enhances caspase activation through multiple pathways. *Cell Death Differ* 11:208-216. 2004
2. Bhuiyan MS, et al: Activation of HtrA2, a mitochondrial serine protease mediates apoptosis: current knowledge on HtrA2 mediated myocardial ischemia/reperfusion injury. *Cardiovasc Ther.* 26(3):224-32. 2008

Purity



The purity of HTRA2 was determined to be **>95%** by densitometry. Approx. MW **29 kDa**.

HTRA2 Protein

Recombinant human protein expressed in E. coli cells

Catalog #	H532-31H
Lot #	Y1091-5
Purity	>95%
Concentration	0.1 µg/µl
Stability	1yr at -70°C from date of shipment
Storage & Shipping	Store product at -70°C . For optimal storage, aliquot target into smaller quantities after centrifugation and store at recommended temperature. For most favorable performance, avoid repeated handling and multiple freeze/thaw cycles. Product shipped on dry ice.

To place your order, please contact us by phone 1-(604)-232-4600, fax 1-604-232-4601 or by email: orders@signalchem.com
www.signalchem.com

FOR IN VITRO RESEARCH PURPOSES ONLY. NOT INTENDED FOR USE IN HUMAN OR ANIMALS.