

Catalogue #	Aliquot Size
P05-10BG -05	5 µg
P05-10BG -10	10 µg
P05-10BG -20	20 µg

PAK4, Active

Full-length recombinant protein expressed in Sf9 cells

Catalog # P05-10BG

Lot # W368-3

Product Description

Recombinant full-length human PAK4 was expressed by baculovirus in Sf9 insect cells using an N-terminal GST tag. The gene accession number is [NM_005884](#).

Gene Aliases

None

Formulation

Recombinant protein stored in 50mM Tris-HCl, pH 7.5, 150mM NaCl, 10mM glutathione, 0.1mM EDTA, 0.25mM DTT, 0.1mM PMSF, 25% glycerol.

Storage and Stability

Store product at -70°C. For optimal storage, aliquot target into smaller quantities after centrifugation and store at recommended temperature. For most favorable performance, avoid repeated handling and multiple freeze/thaw cycles.

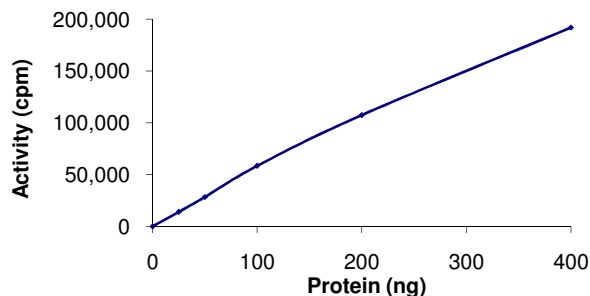
Scientific Background

PAK4 is a recently identified member of the p21-activated kinases (PAKs) which have been implicated in the regulation of cell morphology, motility and transformation. These serine/threonine kinases are activated by and are effectors of small GTPases, cdc 42 and Rac. PAK4 belongs to the Group II PAKs which also includes PAK5 and PAK6. PAK4 has been shown to regulate cell morphology and cytoskeletal organization in mammalian cells.

References

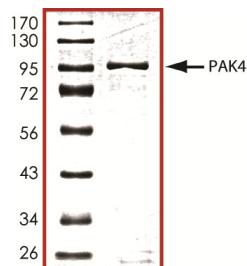
- Jaffer, Z M. et al: p21-activated kinases: three more join the Pak. *Int J Biochem Cell Biol.* 2002 Jul;34(7):713-7.
- Qu, J. et al: Activated PAK4 regulates cell adhesion and anchorage-independent growth. *Mol Cell Biol.* 2001 May;21(10):3523-33.

Specific Activity



The specific activity of PAK4 was determined to be **61 nmol /min/mg** as per activity assay protocol.

Purity



The purity was determined to be **>90%** by densitometry. Approx. MW **90kDa**.

PAK4, Active

Full-length recombinant protein expressed in Sf9 cells

Catalog Number	P05-10BG
Specific Activity	61 nmol/min/mg
Specific Lot Number	W368-3
Purity	>90%
Concentration	0.1µg/µl
Stability	1yr at -70°C from date of shipment
Storage & Shipping	Store product at -70°C. For optimal storage, aliquot target into smaller quantities after centrifugation and store at recommended temperature. For most favorable performance, avoid repeated handling and multiple freeze/thaw cycles. Product shipped on dry ice.

To place your order, please contact us by phone 1-(604)-232-4600, fax 1-604-232-4601 or by email: orders@signalchem.com
www.signalchem.com

FOR IN VITRO RESEARCH PURPOSES ONLY. NOT INTENDED FOR USE IN HUMAN OR ANIMALS.

Activity Assay Protocol

Reaction Components

Active Kinase (Catalog #: P05-10BG)

1: 2 ratio of active PAK4 (0.1µg/µl) and protein CDC42 (Catalog#: C08-30G) (0.2µg/µl) mixture was diluted with Kinase Dilution Buffer III (Catalog #: K23-09) and assayed as outlined in sample activity plot. (Note: these are suggested working dilutions and it is recommended that the researcher perform a serial dilution of Active PAK 4 for optimal results).

Kinase Dilution Buffer III (Catalog #: K23-09)

Kinase Assay Buffer I (Catalog #: K01-09) diluted at a 1:4 ratio (5X dilution) with 50 µg/ml BSA solution.

Kinase Assay Buffer I (Catalog #: K01-09)

Buffer components: 25mM MOPS, pH 7.2, 12.5mM β-glycerol-phosphate, 25mM MgCl₂, 5mM EGTA, 2mM EDTA. Add 0.25mM DTT to Kinase Assay Buffer prior to use.

[³³P]-ATP Assay Cocktail

Prepare 250µM [³³P]-ATP Assay Cocktail in a designated radioactive working area by adding the following components: 150µl of 10mM ATP Stock Solution (Catalog #: A50-09), 100µl [³³P]-ATP (1mCi/100µl), 5.75ml of Kinase Assay Buffer I (Catalog #: K01-09). Store 1ml aliquots at -20°C.

10mM ATP Stock Solution (Catalog #: A50-09)

Prepare ATP stock solution by dissolving 55mg of ATP in 10ml of Kinase Assay Buffer I (Catalog #: K01-09). Store 200µl aliquots at -20°C.

Substrate (Catalog #: A05-58C)

Modified AKT Substrate peptide (modified-CKRPRASFAE) was diluted in distilled H₂O to a final concentration of 1mg/ml.

Assay Protocol

- Step 1.** Thaw [³³P]-ATP Assay Cocktail in shielded container in a designated radioactive working area.
- Step 2.** Thaw the Active PAK4, Kinase Assay Buffer, Substrate and Kinase Dilution Buffer on ice.
- Step 3.** In a pre-cooled microfuge tube, add the following reaction components bringing the initial reaction volume up to 20µl:
 - Component 1.** 10µl of diluted Active PAK4 and protein CDC42 mixture (1 : 2 ratio)
 - Component 2.** 5µl of 1mg/ml stock solution of substrate (Catalog #A05-58C)
 - Component 3.** 2.5µl of 5µM GTP solution (Catalog #G50-09)
 - Component 4.** 2.5µl distilled H₂O (4°C)
- Step 4.** Set up the blank control as outlined in step 3, excluding the addition of the substrate. Replace the substrate with an equal volume of distilled H₂O.
- Step 5.** Initiate the reaction by the addition of 5µl [³³P]-ATP Assay Cocktail bringing the final volume up to 25µl and incubate the mixture in a water bath at 30°C for 15 minutes.
- Step 6.** After the 15 minute incubation period, terminate the reaction by spotting 20µl of the reaction mixture onto individual pre-cut strips of phosphocellulose P81 paper.
- Step 7.** Air dry the pre-cut P81 strip and sequentially wash in a 1% phosphoric acid solution (dilute 10ml of phosphoric acid and make a 1L solution with distilled H₂O) with constant gentle stirring. It is recommended that the strips be washed a total of 3 intervals for approximately 10 minutes each.
- Step 8.** Count the radioactivity on the P81 paper in the presence of scintillation fluid in a scintillation counter.
- Step 9.** Determine the corrected cpm by removing the blank control value (see Step 4) for each sample and calculate the kinase specific activity as outlined below.

Calculation of [³³P]-ATP Specific Activity (SA) (cpm/pmol)

Specific activity (SA) = cpm for 5µl [³³P]-ATP / pmoles of ATP (in 5µl of a 250µM ATP stock solution, i.e., 1250 pmoles)

Kinase Specific Activity (SA) (pmol/min/µg or nmol/min/mg)

Corrected cpm from reaction / [(SA of ³³P-ATP in cpm/pmol)*(Reaction time in min)*(Enzyme amount in µg or mg)]*[(Reaction Volume) / (Spot Volume)]

To place your order, please contact us by phone 1-(604)-232-4600, fax 1-604-232-4601 or by email: orders@signalchem.com
www.signalchem.com

FOR IN VITRO RESEARCH PURPOSES ONLY. NOT INTENDED FOR USE IN HUMAN OR ANIMALS.