

Catalogue #	Aliquot Size
P95-30BG-05	5 µg
P95-30BG-10	10 µg
P95-30BG-20	20 µg

## PDE7B, Active

Full-length recombinant protein expressed in Sf9 cells

**Catalog # P95-30BG**

Lot # W305-1

### Product Description

Full-length recombinant human PDE7B was expressed by baculovirus in Sf9 insect cells using an N-terminal GST tag. The gene accession number is [NM\\_018945](#).

### Gene Aliases

MGC88256; bA472E5.1

### Formulation

Recombinant protein stored in 50mM Tris-HCl, pH 7.5, 150mM NaCl, 10mM glutathione, 0.1mM EDTA, 0.25mM DTT, 0.1mM PMSF, 25% glycerol.

### Storage and Stability

Store product at  $-70^{\circ}\text{C}$ . For optimal storage, aliquot target into smaller quantities after centrifugation and store at recommended temperature. For most favorable performance, avoid repeated handling and multiple freeze/thaw cycles.

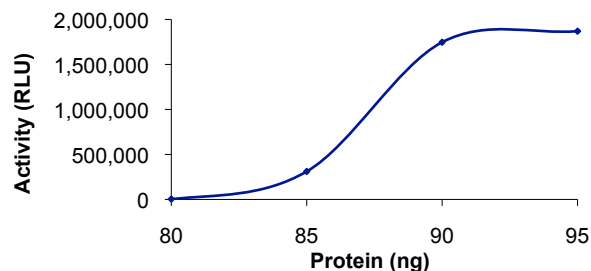
### Scientific Background

PDE7B is a cAMP-specific phosphodiesterase and a member of the cyclic nucleotide phosphodiesterase family that catalyzes the hydrolysis of cAMP to the corresponding 5'-monophosphate and provides a mechanism to downregulate cAMP signaling (1). PDE7B is over-expressed in chronic lymphocytic leukemia and inhibition of PDE7B leads to induction of apoptosis (2). PDE7B has been identified as a candidate gene for measuring treatment response to risperidone and may confer susceptibility to schizophrenia.

### References

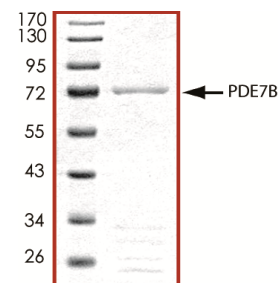
1. Hetman, J. M. et al: Cloning and characterization of PDE7B, a cAMP-specific phosphodiesterase. Proc. Nat. Acad. Sci. 97: 472-476, 2000.
2. Ikeda, M. et al: Identification of novel candidate genes for treatment response to risperidone and susceptibility for schizophrenia: integrated analysis among pharmacogenomics, mouse expression, and genetic case-control association approaches. Biol Psychiatry. 2010 Feb 1;67(3):263-9.

### Specific Activity



The specific activity of PDE7B was determined to be **28 nmol/min/mg** as per activity assay protocol.

### Purity



The purity of PDE7B was determined to be **>80%** by densitometry. Approx. MW **73kDa**.

## PDE7B, Active

Full-length recombinant protein expressed in Sf9 cells

Catalog Number	P95-30BG
Specific Activity	28 nmol/min/mg
Specific Lot Number	W305-1
Purity	>80%
Concentration	0.1µg/µl
Stability	1yr at $-70^{\circ}\text{C}$ from date of shipment
Storage & Shipping	Store product at $-70^{\circ}\text{C}$ . For optimal storage, aliquot target into smaller quantities after centrifugation and store at recommended temperature. For most favorable performance, avoid repeated handling and multiple freeze/thaw cycles. Product shipped on dry ice.

To place your order, please contact us by phone 1-(604)-232-4600, fax 1-604-232-4601 or by email: [orders@signalchem.com](mailto:orders@signalchem.com)  
[www.signalchem.com](http://www.signalchem.com)

**FOR IN VITRO RESEARCH PURPOSES ONLY. NOT INTENDED FOR USE IN HUMAN OR ANIMALS.**

# Activity Assay Protocol

## Reaction Components

### Active PDE7B (Catalog #: P95-30BG)

Active PDE7B (0.1µg/µl) diluted with 1X PDE-Glo™ Reaction Buffer and assayed as outlined in sample activity plot. (Note: these are suggested working dilutions and it is recommended that the researcher perform a serial dilution of Active PDE7B for optimal results).

### 100 mM IBMX Solution

Prepare 100 mM of 3-isobutyl-1-methylxanthine (IBMX) in 100% DMSO. Store aliquots at -20°C.

### PDE-Glo™ Phosphodiesterase Assay Kit (Promega, Cat # V1361)

cAMP and cGMP solution, 1 mM  
PDE-Glo™ Reaction Buffer, 5X  
PDE-Glo™ Termination Buffer, 5X  
PDE-Glo™ Detection Buffer, 5X  
Protein Kinase A (PKA)  
Kinase-Glo™ Substrate  
Kinase-Glo™ Buffer

## Assay Protocol

The PDE7B assay is performed using the PDE-Glo™ Phosphodiesterase Assay kit (Promega; Cat# V1361). The assay involves first a PDE7B reaction between an active PDE7B preparation and a cyclic nucleotide substrate (cAMP). Then PDE-Glo™ Termination Buffer and PDE-Glo™ Detection Buffer (which contains ATP, inactive PKA and PKA substrate) are added to the reaction. The cyclic nucleotide substrate remaining after the PDE7B reaction can bind to the inactive PKA regulatory subunit thereby releasing the active catalytic subunit of PKA. The active catalytic subunit of PKA then catalyzes phosphorylation of the PKA substrate in the presence of ATP which leads to a reduction in ATP level. In the final step, Kinase-Glo™ reagent is added to measure the Luciferase activity towards Luciferin and the luminescent signal produced is related to the amount of ATP remaining which is indirectly related to the activity of PDE7B.

**Step 1.** Thaw the Active PDE7B and PDE-Glo™ Phosphodiesterase Assay Kit reagents on ice.

**Step 2.** Prepare the following working solutions:

- Diluted active PDE7B with 1X PDE-Glo™ Reaction Buffer on ice
- 2µM cAMP substrate solution in 1X PDE-Glo™ Reaction Buffer at ambient temperature
- 1X PDE-Glo™ Termination Buffer in 10 mM IBMX solution at ambient temperature
- 1X PDE-Glo™ detection solution (mix 8µl PKA with 792µl water and 200µl 5X PDE-Glo™ Detection Buffer). Prepare immediately before use
- Kinase-Glo™ reagent by adding Kinase-Glo™ Buffer to Kinase-Glo™ Substrate at ambient temperature

**Step 3.** In a polystyrene 96-well plate, add the following components bringing the initial reaction volume up to 25µl:

**Component 1.** 12.5µl of diluted Active PDE7B (Catalog #P95-30BG)

**Component 2.** 12.5µl of 2µM cAMP solution (0.025 nmol cAMP used per assay)

**Step 4.** Set up a blank control as outlined in step 3 by excluding the addition of the diluted PDE preparation. Replace the PDE preparation with an equal volume of 1X PDE-Glo™ Reaction Buffer.

**Step 5.** Initiate the reaction by adding cAMP substrate solution and incubate the mixture at 30°C for 10 minutes on a plate shaker.

**Step 6.** Terminate the PDE reaction by adding 12.5µl of 1X PDE-Glo™ Termination Buffer. Mix well.

**Step 7.** Add 12.5µl of 1X PDE-Glo™ detection solution. Mix well and then incubate at ambient temperature for 20 minutes.

**Step 8.** After the incubation period, add 50µl of Kinase-Glo™ reagent mix and then incubate at ambient temperature for 10 min.

**Step 9.** Read the polystyrene 96-well reaction plate using the KinaseGlo Luminescence Protocol on a GloMax plate reader (Promega; Cat# E7031).

**Step 10.** Perform a cAMP standard curve. Determine RLU at each concentration. Then calculate the corresponding nmol cAMP remaining after the PDE reaction from the standard curve.

**Step 11.** Calculate the PDE specific activity as outlined below.

### PDE Specific Activity (SA) (nmol/min/mg)

$$[\text{cAMP total (nmol)} - \text{cAMP remaining (nmol)}] / (\text{Reaction time in min}) * (\text{Enzyme amount in mg})$$

To place your order, please contact us by phone 1-(604)-232-4600, fax 1-604-232-4601 or by email: [orders@signalchem.com](mailto:orders@signalchem.com)  
[www.signalchem.com](http://www.signalchem.com)

**FOR IN VITRO RESEARCH PURPOSES ONLY. NOT INTENDED FOR USE IN HUMAN OR ANIMALS.**