

EIF4E Protein

Full-length recombinant protein expressed in E. coli cells

Catalog # E34-30G

Lot # W091-3

Product Description

Recombinant full-length human EIF4E was expressed in E.coli cells using an N-terminal GST tag. The gene accession number is [NM_001968](#).

Gene Aliases

CBP

Formulation

Recombinant protein stored in 50mM Tris-HCl, pH 7.5, 150mM NaCl, 10mM glutathione, 0.1mM EDTA, 0.25mM DTT, 0.1mM PMSF, 25% glycerol.

Storage and Stability

Store product at -70°C. For optimal storage, aliquot target into smaller quantities after centrifugation and store at recommended temperature. For most favorable performance, avoid repeated handling and multiple freeze/thaw cycles.

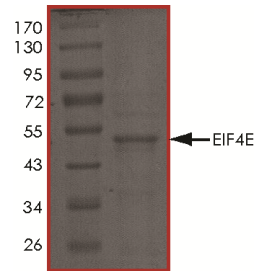
Scientific Background

Eukaryotic Translation Initiation Factor 4E (EIF4E), plays a role in translation initiation where it binds the 5' m7G cap found on mRNAs. EIF4E governs cell cycle progression and cellular proliferation by coordinately the expression of several genes at the post-transcriptional level. EIF4E functions as a central node of an RNA regulon, which plays an essential role in normal differentiation and development (1). The significant association of EIF4E with VEGF and cyclin D1 in multiple tumors supports a role for EIF4E in translational regulation of proteins related to angiogenesis and growth. The overexpression of EIF4E is involved in the malignant progression of human breast cancer (2).

References

1. Culjkovic, B. et al: Controlling gene expression through RNA regulons: the role of the eukaryotic translation initiation factor eIF4E. *Cell Cycle*. 2007; 6(1):65-9.
2. Zhou, S. et al: Eukaryotic initiation factor 4E (eIF4E) and angiogenesis: prognostic markers for breast cancer. *BMC Cancer*. 2006; 30 (6): 231.

Purity



The purity of EIF4E protein was determined to be **>85%** by densitometry. Approx. MW **51kDa**.

EIF4E Protein

Full-length recombinant protein expressed in E. coli cells

Catalog #	E34-30G
Lot #	W091-3
Purity	>85%
Concentration	0.2 µg/µl
Stability	1yr at -70°C from date of shipment
Storage & Shipping	Store product at -70°C. For optimal storage, aliquot target into smaller quantities after centrifugation and store at recommended temperature. For most favorable performance, avoid repeated handling and multiple freeze/thaw cycles. Product shipped on dry ice.

To place your order, please contact us by phone 1-(604)-232-4600, fax 1-604-232-4601 or by email: orders@signalchem.com
www.signalchem.com

FOR IN VITRO RESEARCH PURPOSES ONLY. NOT INTENDED FOR USE IN HUMAN OR ANIMALS.