

Anti-p38 γ

Rabbit Polyclonal Antibody

Catalog # M37-63R

Lot # V348-3

Cited Applications

- Western blot (1:1000)

Ideal working dilutions for each application should be empirically determined by the investigator.

Specificity

Recognizes the p38 γ protein

Cross Reactivity

- Western blot human p38 γ

p38 γ from other species may also be detectable

Host

Rabbit

Immunogen

C-terminal peptide of p38 γ conjugated to ovalbumin

Formulation

TBS pH 7.2, 50% glycerol

Stability

Store at 4°C (add 0.1% NaN₃) for several months, and at -20°C for longer periods. For optimal storage, aliquot target into smaller quantities after centrifugation and store at recommended temperature. For optimal performance, avoid repeated handling and multiple freeze/thaw cycles.

Scientific Background

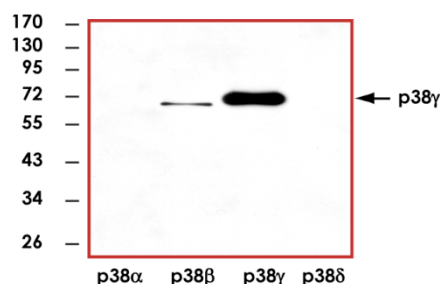
p38 γ is a member of the p38 MAPK family which is activated in response to stress (1). p38 γ gene was mapped to 22q13.3 and functions as a signal transducer during differentiation of myoblasts to myotubes. Enforced localization of p38 γ in the nucleus or cytoplasm markedly attenuates the ability of the kinase to induce cell cycle arrest in fibroblasts. p38 γ increases basal glucose uptake and decreases DNP- and contraction-stimulated glucose uptake, partially by affecting levels of glucose transporter expression in skeletal muscle (2).

References

1. Li, Z. et al: The primary structure of p38-gamma: a new member of p38 group of MAP kinases. *Biochem. Biophys. Res. Commun.* 228: 334-340, 1996.
2. Ho, RC. et al: p38gamma MAPK regulation of glucose transporter expression and glucose uptake in L6 myotubes and mouse skeletal

muscle. *Am J Physiol Regul Integr Comp Physiol.* 2004 Feb; 286(2):R342-9. Epub 2003 Oct 30.

Sample Data



Representative western blot with Anti-p38 γ (1:1000) using 20 ng of p38 α , p38 β , p38 γ , and p38 δ recombinant protein.

Anti-p38 γ

Rabbit Polyclonal Antibody

Catalog Number

M37-63R

Specific Lot Number

V348-3

Purification

Affinity chromatography

Concentration

1.0 μ g/ μ L

Stability

1 yr At -20°C from date of shipment

Storage & Shipping

Store product at -20°C. For optimal storage, aliquot antibody into smaller quantities after centrifugation and store at recommended temperature. For optimal performance, avoid repeated handling and multiple freeze/thaw cycles. Product shipped on ice packs.

To place your order, please contact us by phone 1-(604)-232-4600, fax 1-604-232-4601 or by email: orders@signalchem.com
www.signalchem.com

FOR IN VITRO RESEARCH PURPOSES ONLY. NOT INTENDED FOR USE IN HUMAN OR ANIMALS.