

## Anti-p38 $\beta$

Rabbit Polyclonal Antibody

**Catalog # M36-63R**

Lot # V348-2

### Cited Applications

- Western blot (1:1000)

Ideal working dilutions for each application should be empirically determined by the investigator.

### Specificity

Recognizes the p38 $\beta$  protein

### Cross Reactivity

- Western blot human p38 $\beta$

p38 $\beta$  from other species may also be detectable

### Host

Rabbit

### Immunogen

C-terminal peptide of p38 $\beta$  conjugated to ovalbumin

### Formulation

TBS pH 7.2, 50% glycerol

### Stability

Store at 4°C (add 0.1% NaN<sub>3</sub>) for several months, and at -20°C for longer periods. For optimal storage, aliquot target into smaller quantities after centrifugation and store at recommended temperature. For optimal performance, avoid repeated handling and multiple freeze/thaw cycles.

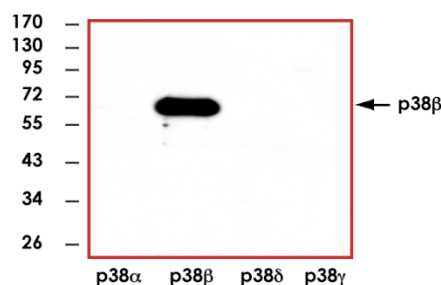
### Scientific Background

p38 $\beta$  is a member of the p38 MAP kinase family and is activated by both proinflammatory cytokines and environmental stress (1). The p38 $\beta$  is activated through its phosphorylation by MAP kinase kinases (MKKs), preferably by MKK6. Transcription factor ATF2/CREB2 has been shown to be a substrate of this kinase (2). Alternatively spliced transcript variants encoding the same protein have been observed.

### References

1. Jiang, Y. et al: Characterization of the structure and function of a new mitogen-activated protein kinase (p38-beta). J. Biol. Chem. 271: 17920-17926, 1996.
2. Stein, B. et al: p38-2, a novel mitogen-activated protein kinase with distinct properties. J. Biol. Chem. 272: 19509-19517, 1997.

### Sample Data



Representative western blot with Anti-p38 $\beta$  (1:1000) using 20 ng of p38 $\alpha$ , p38 $\beta$ , p38 $\delta$ , and p38 $\gamma$  recombinant protein.

## Anti-p38 $\beta$

Rabbit Polyclonal Antibody

Catalog Number

M36-63R

Specific Lot Number

V348-2

Purification

Affinity chromatography

Concentration

1.0  $\mu$ g/ $\mu$ L

Stability

1 yr At -20°C from date of shipment

Storage & Shipping

Store product at -20°C. For optimal storage, aliquot antibody into smaller quantities after centrifugation and store at recommended temperature. For optimal performance, avoid repeated handling and multiple freeze/thaw cycles. Product shipped on ice packs.

To place your order, please contact us by phone 1-(604)-232-4600, fax 1-604-232-4601 or by email: [orders@signalchem.com](mailto:orders@signalchem.com)  
[www.signalchem.com](http://www.signalchem.com)

**FOR IN VITRO RESEARCH PURPOSES ONLY. NOT INTENDED FOR USE IN HUMAN OR ANIMALS.**