

## Anti-p38 $\alpha$

Rabbit Polyclonal Antibody

**Catalog # M39-63R**

Lot # V348-1

### Cited Applications

- Western blot (1:1000)

*Ideal working dilutions for each application should be empirically determined by the investigator.*

### Specificity

Recognizes the p38 $\alpha$  protein

### Cross Reactivity

- Western blot human p38 $\alpha$

*p38 $\alpha$  from other species may also be detectable*

### Host

Rabbit

### Immunogen

C-terminal peptide of p38 $\alpha$  conjugated to ovalbumin

### Formulation

TBS pH 7.2, 50% glycerol

### Stability

Store at 4°C (add 0.1% NaN<sub>3</sub>) for several months, and at -20°C for longer periods. For optimal storage, aliquot target into smaller quantities after centrifugation and store at recommended temperature. For optimal performance, avoid repeated handling and multiple freeze/thaw cycles.

### Scientific Background

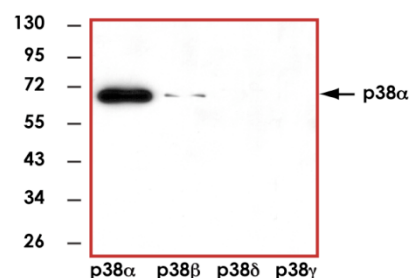
p38 $\alpha$  (SAPK2A) is a member of the p38 MAPK family which are activated by various environmental stresses and proinflammatory cytokines (1). The activation of p38 requires its phosphorylation by MAP kinase kinases (MKKs), or its autophosphorylation triggered by the interaction of MAP3K7IP1/TAB1 protein with this kinase (2). The substrates of p38 include transcription regulator ATF2, MEF2C, and MAX, cell cycle regulator CDC25B, and tumor suppressor p53, which suggest the roles of this kinase in stress related transcription and cell cycle regulation, as well as in genotoxic stress response (5).

### References

1. Han, J. et al: A MAP kinase targeted by endotoxin and hyperosmolarity in mammalian cells. *Science* 265: 808-811, 1994.

2. Ge, B. et al: MAPKK-independent activation of p38-alpha mediated by TAB1-dependent autophosphorylation of p38-alpha. *Science* 295: 1291-1294, 2002.

### Sample Data



Representative western blot with Anti-p38 $\alpha$  (1:1000) using 20 ng of p38 $\alpha$ , p38 $\beta$ , p38 $\gamma$ , and p38 $\delta$  recombinant protein.

## Anti-p38 $\alpha$

Rabbit Polyclonal Antibody

Catalog Number

M38-63R

Specific Lot Number

V348-1

Purification

Affinity chromatography

Concentration

1.0  $\mu$ g/ $\mu$ L

Stability

1yr At -20°C from date of shipment

Storage & Shipping

Store product at -20°C. For optimal storage, aliquot antibody into smaller quantities after centrifugation and store at recommended temperature. For optimal performance, avoid repeated handling and multiple freeze/thaw cycles. Product shipped on ice packs.

To place your order, please contact us by phone 1-(604)-232-4600, fax 1-604-232-4601 or by email: [orders@signalchem.com](mailto:orders@signalchem.com)  
[www.signalchem.com](http://www.signalchem.com)

**FOR IN VITRO RESEARCH PURPOSES ONLY. NOT INTENDED FOR USE IN HUMAN OR ANIMALS.**