

## Anti-ERK1

Mouse Monoclonal Antibody

Catalog # **M29-60BM**

Lot # V058-5

### Cited Applications

- Immunoprecipitation (0.5 µg)
- Western blot (1:10,000 dilution)

Ideal working dilutions for each application should be empirically determined by the investigator.

### Specificity

Recognizes only the ERK1 protein

### Cross Reactivity

- Immunoprecipitation of ERK1 from human cells
- Western blot ERK1 from human and mouse cells

ERK1 from other species may also be detectable

### Host/Isotype/Clone#

Mouse, IgG1, E19

### Immunogen

Recombinant full length human ERK1 protein

### Formulation

10mM PBS pH 7.2

### Stability

Store at 4°C (add 0.1% NaN<sub>3</sub>) for several months, and at -20°C for longer periods. For optimal storage, aliquot antibody into smaller quantities after centrifugation and store at recommended temperature. For optimal performance, avoid repeated handling and multiple freeze/thaw cycles.

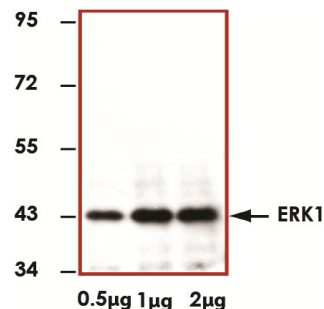
### Scientific Background

ERK1 is a protein serine/threonine kinase that is a member of the extracellular signal-regulated kinases (ERKs) which are activated in response to numerous growth factors and cytokines (1). Activation of ERK1 requires both tyrosine and threonine phosphorylation that is mediated by MEK. ERK1 is ubiquitously distributed in tissues with the highest expression in heart, brain and spinal cord. Activated ERK1 translocates into the nucleus where it phosphorylates various transcription factors (e.g., Elk-1, c-Myc, c-Jun, c-Fos, and C/EBP beta).

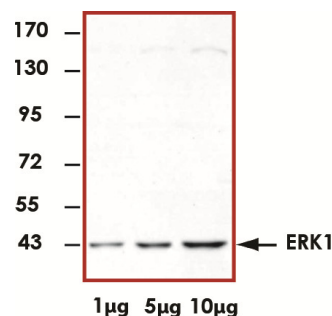
### References

1. Boulton, TG. et al: Purification and properties of extracellular signal-regulated kinase 1, an insulin-stimulated microtubule-associated protein 2 kinase. *Biochemistry*. 1991 Jan 8;30(1):278-86.

### Sample Data



Representative immunoprecipitation with 0.5 µg, 1 µg, 2 µg of Anti-ERK1 using 50 µg of Jurkat cell lysate.



Representative western blot with Anti-ERK1 (1:10,000) using 1 µg, 5 µg, and 10 µg of HEK-293 cell lysate.

## Anti-ERK1

Mouse Monoclonal Antibody

Catalog Number

M29-60BM

Specific Lot Number

V058-5

Purification  
Concentration

Affinity purified using Protein G  
1.0 µg/µL

Stability

1yr at -20°C from date of shipment

Storage & Shipping

Store product at -20°C. For optimal storage, aliquot antibody into smaller quantities after centrifugation and store at recommended temperature. For optimal performance, avoid repeated handling and multiple freeze/thaw cycles. Product shipped on ice packs.

To place your order, please contact us by phone 1-(604)-232-4600, fax 1-604-232-4601 or by email: [orders@signalchem.com](mailto:orders@signalchem.com)

[www.signalchem.com](http://www.signalchem.com)

**FOR IN VITRO RESEARCH PURPOSES ONLY. NOT INTENDED FOR USE IN HUMAN OR ANIMALS.**