

Anti-p38α

Mouse Monoclonal Antibody

Catalog # M39-60M

Lot # V058-3

Cited Applications

- Western blot (1:1000)

Ideal working dilutions for each application should be empirically determined by the investigator.

Specificity

Recognizes the p38α protein

Cross Reactivity

- Western blot p38α from human and mouse cells
p38α from other species may also be detectable

Host/Isotype/Clone#

Mouse, IgG1, 9F12

Immunogen

Recombinant full length p38α protein

Formulation

0.1M TRIS pH 8.0, 0.1M glycine

Stability

Store at 4°C (add 0.1% NaN₃) for several months, and at -20°C for longer periods. For optimal storage, aliquot antibody into smaller quantities after centrifugation and store at recommended temperature. For optimal performance, avoid repeated handling and multiple freeze/thaw cycles.

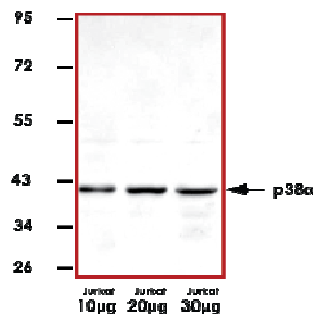
Scientific Background

p38α (SAPK2A) is a member of the p38 MAPK family which are activated by various environmental stresses and proinflammatory cytokines (1). The activation of p38 requires its phosphorylation by MAP kinase kinases (MKKs), or its autophosphorylation triggered by the interaction of MAP3K7IP1/TAB1 protein with this kinase (2).

References

1. Han, J. et al: A MAP kinase targeted by endotoxin and hyperosmolarity in mammalian cells. *Science* 265: 808-811, 1994.
2. Ge, B. et al: MAPKK-independent activation of p38-alpha mediated by TAB1-dependent autophosphorylation of p38-alpha. *Science* 295: 1291-1294, 2002.

Sample Data



Representative western blot with Anti-p38α (1:1000) using 10 µg, 20 µg, and 30 µg of Jurkat cell lysate.

Anti-p38α

Mouse Monoclonal Antibody

Catalog Number

M39-60M

Specific Lot Number

V058-3

Purification

Affinity purified using Protein G

Format

100 µg in 100 µl

Concentration

1.0 µg/µL

Stability

1yr at -20°C from date of shipment

Storage & Shipping

Store product at -20°C. For optimal storage, aliquot antibody into smaller quantities after centrifugation and store at recommended temperature. For optimal performance, avoid repeated handling and multiple freeze/thaw cycles. Product shipped on ice packs.

To place your order, please contact us by phone 1-(604)-232-4600, fax 1-604-232-4601 or by email: orders@signalchem.com
www.signalchem.com

FOR IN VITRO RESEARCH PURPOSES ONLY. NOT INTENDED FOR USE IN HUMAN OR ANIMALS.