

## Anti-GSK3 $\beta$

Mouse Monoclonal Antibody

Catalog # **G09-60M**

Lot # V058-1

### Cited Applications

- Western blot (1:1000)

*Ideal working dilutions for each application should be empirically determined by the investigator.*

### Specificity

Recognizes the only the GSK3 $\beta$  protein

### Cross Reactivity

- Western blot GSK3 $\beta$  from human and mouse cells

*GSK3 $\beta$  from other species may also be detectable*

### Host/Isotype/Clone#

Mouse, IgG1, 6C2

### Immunogen

Recombinant full length human GSK3 $\beta$  protein

### Formulation

0.1M TRIS at pH 8.0, 0.1M glycine

### Stability

Store at 4°C (add 0.1% NaN<sub>3</sub>) for several months, and at -20°C for longer periods. For optimal storage, aliquot antibody into smaller quantities after centrifugation and store at recommended temperature. For optimal performance, avoid repeated handling and multiple freeze/thaw cycles.

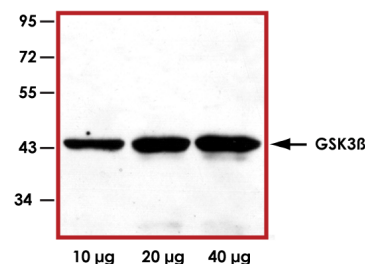
### Scientific Background

GSK3 $\beta$  is a serine threonine protein kinase that was originally identified as the kinase that phosphorylates and inhibits glycogen synthase (1). GSK3 $\beta$  is ubiquitously present in human tissues and implicated in the regulation of several physiological processes, including the control of glycogen and protein synthesis by insulin, modulation of the transcription factors AP-1 and CREB.

### References

1. Sutherland C. et al: Inactivation of glycogen synthase kinase 3 beta by phosphorylation: new kinase connections in insulin and growth-factor signalling. *Biochem J.* 1993 Nov 15;296(Pt1):15-9.

### Sample Data



Representative western blot with Anti-GSK3 $\beta$  (1:1000) using 10  $\mu$ g, 20  $\mu$ g, and 40  $\mu$ g of HeLa cell lysate.

## Anti-GSK3 $\beta$

Mouse Monoclonal Antibody

Catalog Number

G09-60M

Specific Lot Number

V058-1

Purification

Affinity purified using Protein G

Concentration

1.0  $\mu$ g/ $\mu$ L

Stability

1yr At -20°C from date of shipment

Storage & Shipping

Store product at -20°C. For optimal storage, aliquot antibody into smaller quantities after centrifugation and store at recommended temperature. For optimal performance, avoid repeated handling and multiple freeze/thaw cycles. Product shipped on ice packs.

To place your order, please contact us by phone 1-(604)-232-4600, fax 1-604-232-4601 or by email: [orders@signalchem.com](mailto:orders@signalchem.com)  
[www.signalchem.com](http://www.signalchem.com)

**FOR IN VITRO RESEARCH PURPOSES ONLY. NOT INTENDED FOR USE IN HUMAN OR ANIMALS.**