

Anti-GFP

Mouse Monoclonal Antibody

Catalog # **G46-60M**

Lot # V023-1

Cited Applications

- Western blot (1:3000 dilution)

Ideal working dilutions for each application should be empirically determined by the investigator.

Specificity

Recognizes the GFP protein

Cross Reactivity

- Western blot GFP and variants EGFP, YFP, EYFP, and CFP

Other GFP variants may also be detectable

Host/Isotype/Clone#

Mouse, IgG1, GF28R

Immunogen

GFP N-terminal peptide with KLH conjugate from Aequorea Victoria Jellyfish

Formulation

10mM PBS pH 7.2

Stability

Store at 4°C (add 0.1% NaN₃) for several months, and at -20°C for longer periods. For optimal storage, aliquot target into smaller quantities after centrifugation and store at recommended temperature. For optimal performance, avoid repeated handling and multiple freeze/thaw cycles.

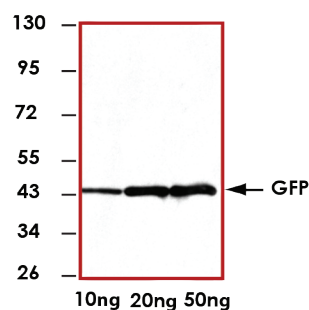
Scientific Background

Originally derived from the jellyfish Aequorea Victoria, Green fluorescent protein (GFP) has become an invaluable tag and reporter protein in molecular and cellular biology. GFP has a molecular weight of 26.9 kDa and when excited with blue light at 395nm it will fluoresce green with an emission peak at 509nm (1). The GFP structure is made up of a fluorophore containing alpha helix that is enveloped by a beta barrel that protects the fluorophore from localized quenching when excited (1).

References

1. RY, Tsien. Review: The green fluorescent protein. Annu Rev Biochem. 1998;67:509-44.

Sample Data



Representative Western Blot with Anti-GFP (1:3000) using 5 µg, 10 µg, and 20 µg of GFP positive cell lysate.

Anti-GFP

Mouse Monoclonal Antibody

Catalog Number

G46-60M

Specific Lot Number

V023-1

Purification

Affinity purified using Protein G

Concentration

1.0 µg/µL

Stability

1yr At -20°C from date of shipment

Storage & Shipping

Store product at -20°C. For optimal storage, aliquot antibody into smaller quantities after centrifugation and store at recommended temperature. For optimal performance, avoid repeated handling and multiple freeze/thaw cycles. Product shipped on ice packs.

To place your order, please contact us by phone 1-(604)-232-4600, fax 1-604-232-4601 or by email: orders@signalchem.com
www.signalchem.com

FOR IN VITRO RESEARCH PURPOSES ONLY. NOT INTENDED FOR USE IN HUMAN OR ANIMALS.