

## PKC $\mu$ , Active

Full-length recombinant human protein expressed in Sf9 cells

**Catalog # P72-10G**

Lot # U1621-4

### Product Description

Recombinant full-length human PKC $\mu$  was expressed by baculovirus in Sf9 insect cells using an N-terminal GST tag. The gene accession number is [X75756](#).

### Gene Aliases

PKD; PKCM; PRKCM

### Formulation

Recombinant protein stored in 50mM Tris-HCl, pH 7.5, 150mM NaCl, 10mM glutathione, 0.1mM EDTA, 0.25mM DTT, 0.1mM PMSF, 25% glycerol.

### Storage and Stability

Store product at  $-70^{\circ}\text{C}$ . For optimal storage, aliquot target into smaller quantities after centrifugation and store at recommended temperature. For most favorable performance, avoid repeated handling and multiple freeze/thaw cycles.

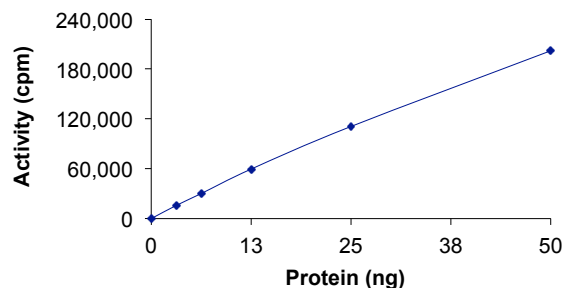
### Scientific Background

Protein kinase C mu (PKC $\mu$ ) is a member of the protein kinase C (PKC) family that differs from the other PKC isoenzymes in structural and enzymatic properties. PKC $\mu$  is ubiquitous in nature with the highest expression in the thymus, lung and peripheral blood mononuclear cells (1). PKC $\mu$  forms a complex in vivo with a phosphatidylinositol 4-kinase and a phosphatidylinositol-4-phosphate 5-kinase. A region of PKC $\mu$  between the amino-terminal transmembrane domain and the pleckstrin homology domain is shown to be involved in the association with the lipid kinases (2).

### References

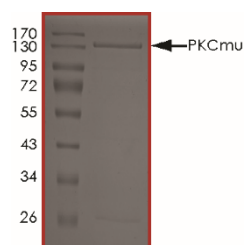
1. Rennecke, J. et al: Immunological demonstration of protein kinase C mu in murine tissues and various cell lines. *Eur J Biochem.* 1996 Dec 1;242(2):428-32.
2. Nishikawa, K. et al: Association of protein kinase Cmu with type II phosphatidylinositol 4-kinase and type phosphatidylinositol-4-phosphate 5-kinase. *J Biol Chem.* 1998 Sep 4;273(36):23126-33.

### Specific Activity



The specific activity of PKC $\mu$  was determined to be **650 nmol/min/mg** as per activity assay protocol.

### Purity



The purity of PKC $\mu$  was determined to be **>85%** by densitometry. Approx. MW **131kDa**.

## PKC $\mu$ , Active

Full-length recombinant human protein expressed in Sf9 cells

Catalog #	P72-10G
Specific Activity	650 nmol/min/mg
Lot #	U1621-4
Purity	>85%
Concentration	0.1µg/µl
Stability	1yr at $-70^{\circ}\text{C}$ from date of shipment
Storage & Shipping	Store product at $-70^{\circ}\text{C}$ . For optimal storage, aliquot target into smaller quantities after centrifugation and store at recommended temperature. For most favorable performance, avoid repeated handling and multiple freeze/thaw cycles. Product shipped on dry ice.

To place your order, please contact us by phone 1-(604)-232-4600, fax 1-604-232-4601 or by email: [orders@signalchem.com](mailto:orders@signalchem.com)  
[www.signalchem.com](http://www.signalchem.com)

**FOR IN VITRO RESEARCH PURPOSES ONLY. NOT INTENDED FOR USE IN HUMAN OR ANIMALS.**

# Activity Assay Protocol

## Reaction Components

### Active Kinase (Catalog #: P72-10G)

Active PKC $\mu$  (0.1 $\mu$ g/ $\mu$ l) diluted with Kinase Dilution Buffer I (Catalog #: K21-09) and assayed as outlined in sample activity plot. (Note: these are suggested working dilutions and it is recommended that the researcher perform a serial dilution of Active PKC $\mu$  for optimal results).

### Kinase Dilution Buffer I (Catalog #: K21-09)

Kinase Assay Buffer I (Catalog #: K01-09) diluted at a 1:4 ratio (5X dilution) with distilled H<sub>2</sub>O.

### Kinase Assay Buffer I (Catalog #: K01-09)

Buffer components: 25mM MOPS, pH 7.2, 12.5mM  $\beta$ -glycerol-phosphate, 25mM MgCl<sub>2</sub>, 5mM EGTA, 2mM EDTA. Add 0.25mM DTT to Kinase Assay Buffer prior to use.

### [<sup>33</sup>P]-ATP Assay Cocktail

Prepare 250 $\mu$ M [<sup>33</sup>P]-ATP Assay Cocktail in a designated radioactive working area by adding the following components: 150 $\mu$ l of 10mM ATP Stock Solution (Catalog #: A50-09), 100 $\mu$ l [<sup>33</sup>P]-ATP (1mCi/100 $\mu$ l), 5.75ml of Kinase Assay Buffer I (Catalog #: K01-09). Store 1ml aliquots at -20°C.

### 10mM ATP Stock Solution (Catalog #: A50-09)

Prepare ATP stock solution by dissolving 55mg of ATP in 10ml of Kinase Assay Buffer I (Catalog #: K01-09). Store 200 $\mu$ l aliquots at -20°C.

### Substrate (Catalog #: C50-58)

CREBtide synthetic peptide substrate (KRREILSRPSYR) diluted in distilled H<sub>2</sub>O to a final concentration of 1mg/ml.

## Assay Protocol

- Step 1.** Thaw [<sup>33</sup>P]-ATP Assay Cocktail in shielded container in a designated radioactive working area.
- Step 2.** Thaw the Active PKC $\mu$ , Kinase Assay Buffer, Substrate and Kinase Dilution Buffer on ice.
- Step 3.** In a pre-cooled microfuge tube, add the following reaction components bringing the initial reaction volume up to 20 $\mu$ l:
  - Component 1.** 10 $\mu$ l of diluted Active PKC $\mu$  (Catalog #P72-10G)
  - Component 2.** 5 $\mu$ l of 1mg/ml stock solution of substrate (Catalog #C50-58)
  - Component 3.** 5 $\mu$ l distilled H<sub>2</sub>O (4°C)
- Step 4.** Set up the blank control as outlined in step 3, excluding the addition of the substrate. Replace the substrate with an equal volume of distilled H<sub>2</sub>O.
- Step 5.** Initiate the reaction by the addition of 5 $\mu$ l [<sup>33</sup>P]-ATP Assay Cocktail bringing the final volume up to 25 $\mu$ l and incubate the mixture in a water bath at 30°C for 15 minutes.
- Step 6.** After the 15 minute incubation period, terminate the reaction by spotting 20 $\mu$ l of the reaction mixture onto individual pre-cut strips of phosphocellulose P81 paper.
- Step 7.** Air dry the pre-cut P81 strip and sequentially wash in a 1% phosphoric acid solution (dilute 10ml of phosphoric acid and make a 1L solution with distilled H<sub>2</sub>O) with constant gentle stirring. It is recommended that the strips be washed a total of 3 intervals for approximately 10 minutes each.
- Step 8.** Count the radioactivity on the P81 paper in the presence of scintillation fluid in a scintillation counter.
- Step 9.** Determine the corrected cpm by removing the blank control value (see Step 4) for each sample and calculate the kinase specific activity as outlined below.

### Calculation of [<sup>33</sup>P]-ATP Specific Activity (SA) (cpm/pmol)

Specific activity (SA) = cpm for 5 $\mu$ l [<sup>33</sup>P]-ATP / pmoles of ATP (in 5 $\mu$ l of a 250 $\mu$ M ATP stock solution, i.e., 1250 pmoles)

### Kinase Specific Activity (SA) (pmol/min/ $\mu$ g or nmol/min/mg)

Corrected cpm from reaction / [(SA of <sup>33</sup>P-ATP in cpm/pmol)\*(Reaction time in min)\*(Enzyme amount in  $\mu$ g or mg)]\*[(Reaction Volume) / (Spot Volume)]

To place your order, please contact us by phone 1-(604)-232-4600, fax 1-604-232-4601 or by email: [orders@signalchem.com](mailto:orders@signalchem.com)  
[www.signalchem.com](http://www.signalchem.com)

**FOR IN VITRO RESEARCH PURPOSES ONLY. NOT INTENDED FOR USE IN HUMAN OR ANIMALS.**