

## ATF1 Protein

Full-length recombinant protein expressed in Sf9 cells

Catalog # **A09-54G**

Lot # *U135-1*

### Product Description

Recombinant full-length human ATF1 was expressed by baculovirus in Sf9 insect cells using an N-terminal GST tag. The gene accession number is [NM\\_005171](#).

### Gene Aliases

TREB36, EWS-ATF1, FUS/ATF-1

### Formulation

Recombinant protein stored in 50mM Tris-HCl, pH 7.5, 150mM NaCl, 0.25mM DTT, 0.1mM PMSF, 25% glycerol.

### Storage and Stability

Store product at  $-70^{\circ}\text{C}$ . For optimal storage, aliquot target into smaller quantities after centrifugation and store at recommended temperature. For most favorable performance, avoid repeated handling and multiple freeze/thaw cycles.

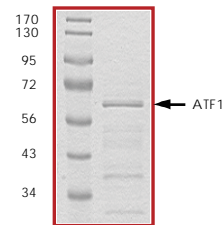
### Scientific Background

ATF1 is a class of transcription factor that stimulates gene expression of several cell growth-related genes through protein kinase A-related cAMP response elements. ATF1 can physically associate with BRCA1 in vitro, in yeast, and in human cells and BRCA1 is implicated in the transcriptional activation of ATF1 target genes, some of which are involved in the transcriptional response to DNA damage (1). Mitogen- and stress-activated protein kinase 1 (MSK1) and MSK2 play a role in the stress-induced phosphorylation of ATF1 in primary embryonic fibroblasts. However, mitogen-induced phosphorylation of ATF1 is greatly reduced (2).

### References

1. Houvras, Y. et al: BRCA1 physically and functionally interacts with ATF1. *J Biol Chem.* 2000 Nov 17;275(46):36230-7.
2. Wiggan, G R. et al: MSK1 and MSK2 are required for the mitogen- and stress-induced phosphorylation of CREB and ATF1 in fibroblasts. *Mol Cell Biol.* 2002 Apr;22(8):2871-81.

### Purity



The purity of ATF1 was determined to be **>75%** by densitometry. Approx. MW **63kDa**.

## ATF1 Protein

Full-length recombinant protein expressed in Sf9 cells

Catalog Number	A09-54G
Specific Lot Number	U135-1
Purity	>75%
Concentration	0.2 $\mu\text{g}/\mu\text{l}$
Stability	1yr At $-70^{\circ}\text{C}$ from date of shipment
Storage & Shipping	Store product at $-70^{\circ}\text{C}$ . For optimal storage, aliquot target into smaller quantities after centrifugation and store at recommended temperature. For most favorable performance, avoid repeated handling and multiple freeze/thaw cycles. Product shipped on dry ice.

To place your order, please contact us by phone 1-(604)-232-4600, fax 1-604-232-4601 or by email: [orders@signalchem.com](mailto:orders@signalchem.com)  
[www.signalchem.com](http://www.signalchem.com)

**FOR IN VITRO RESEARCH PURPOSES ONLY. NOT INTENDED FOR USE IN HUMAN OR ANIMALS.**