

FGFR4 (N535K), Active

Recombinant human protein expressed in Sf9 cells

Catalog # F07-12G

Lot # T1017-1

Product Description

Recombinant human FGFR4 (N535K) (460-end) was expressed by baculovirus in Sf9 cells using an N-terminal GST tag. The gene accession number is [NM_002011](#).

Gene Aliases

TKF, JTK2, CD334, MGC20292

Formulation

Recombinant protein stored in 50mM Tris-HCl, pH 7.5, 150mM NaCl, 10mM glutathione, 0.1mM EDTA, 0.25mM DTT, 0.1mM PMSF, 25% glycerol.

Storage and Stability

Store product at -70°C. For optimal storage, aliquot target into smaller quantities after centrifugation and store at recommended temperature. For most favorable performance, avoid repeated handling and multiple freeze/thaw cycles.

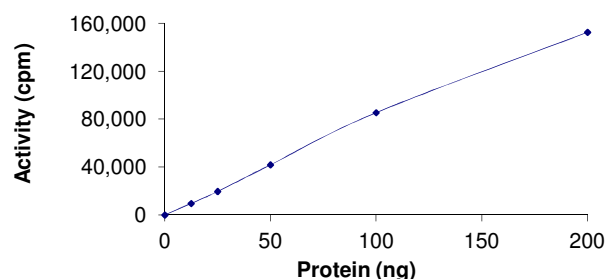
Scientific Background

FGFR4 is a member of the fibroblast growth factor receptor family which play a role in mitogenesis and differentiation (1). FGFR4 preferentially binds acidic fibroblast growth factor and is overexpressed in gynecological tumor samples, suggesting a role in breast and ovarian tumorigenesis. FGFR4 gene expression is up-regulated in doxorubicin-treated, apoptosis-resistant cancer cell clones (2). Ectopic expression of FGFR4 in cancer cells leads to reduced apoptosis sensitivity on treatment with doxorubicin or cyclophosphamide, whereas knockdown of endogenous FGFR4 expression in breast cancer cell lines has the opposite effect.

References

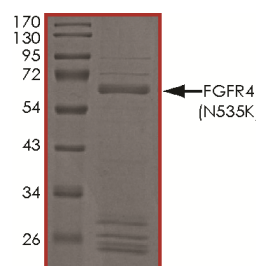
- Holtrich, U.:: Two additional protein-tyrosine kinases expressed in human lung: fourth member of the fibroblast growth factor receptor family and an intracellular protein-tyrosine kinase. *Proc. Nat. Acad. Sci.* 88: 10411-10415, 1991.
- Roidl, A. et al: Resistance to chemotherapy is associated with fibroblast growth factor receptor 4 up-regulation. *Clin Cancer Res.* 2009 Mar 15;15(6):2058-66.

Specific Activity



The specific activity of FGFR4 (N535K) was determined to be **50 nmol/min/mg** as per activity assay protocol.

Purity



The purity of FGFR4 (N535K) was determined to be **>80%** by densitometry. Approx. MW **~65kDa**.

FGFR4 (N535K), Active

Recombinant human protein expressed in Sf9 cells

Catalog #	F07-12G
Specific Activity	50 nmol/min/mg
Lot #	T1017-1
Purity	>80%
Concentration	0.1 µg/µl
Stability	1yr at -70°C from date of shipment
Storage & Shipping	Store product at -70°C. For optimal storage, aliquot target into smaller quantities after centrifugation and store at recommended temperature. For most favorable performance, avoid repeated handling and multiple freeze/thaw cycles. Product shipped on dry ice.

To place your order, please contact us by phone 1-(604)-232-4600, fax 1-604-232-4601 or by email: orders@signalchem.com
www.signalchem.com

FOR IN VITRO RESEARCH PURPOSES ONLY. NOT INTENDED FOR USE IN HUMAN OR ANIMALS.

Activity Assay Protocol

Reaction Components

Active Kinase (Catalog #: F07-12G)

Active FGFR4 (N535K) (0.1µg/µl) diluted with Kinase Dilution Buffer IV (Catalog #: K24-09) and assayed as outlined in sample activity plot. (Note: these are suggested working dilutions and it is recommended that the researcher perform a serial dilution of Active FGFR4 (N535K) for optimal results).

Kinase Dilution Buffer IV (Catalog #: K24-09)

Kinase Assay Buffer II (Catalog #: K02-09) diluted at a 1:4 ratio (5X dilution) with 50 µg/ml BSA solution.

Kinase Assay Buffer II (Catalog #: K02-09)

Buffer components: 25mM MOPS pH 7.2, 12.5mM β-glycerol-phosphate, 20mM MgCl₂, 12.5mM MnCl₂, 5mM EGTA, 2mM EDTA. Add 0.25mM DTT to Kinase Assay Buffer prior to use.

[³³P]-ATP Assay Cocktail

Prepare 250µM [³³P]-ATP Assay Cocktail in a designated radioactive working area by adding the following components: 150µl of 10mM ATP Stock Solution (Catalog #: A50-09), 100µl [³³P]-ATP (1mCi/100µl), 5.75ml of Kinase Assay Buffer II (Catalog #: K02-09). Store 1ml aliquots at -20°C.

10mM ATP Stock Solution (Catalog #: A50-09)

Prepare ATP stock solution by dissolving 55mg of ATP in 10ml of Kinase Assay Buffer II (Catalog #: K02-09). Store 200µl aliquots at -20°C.

Substrate (Catalog #: P61-58)

Poly (4:1 Glu, Tyr) synthetic peptide substrate diluted in distilled H₂O to a final concentration of 1mg/ml. a final concentration of 1 mg/ml.

Assay Protocol

- Step 1.** Thaw [³³P]-ATP Assay Cocktail in shielded container in a designated radioactive working area.
- Step 2.** Thaw the Active FGFR4 (N535K), Kinase Assay Buffer, Substrate and Kinase Dilution Buffer on ice.
- Step 3.** In a pre-cooled microfuge tube, add the following reaction components bringing the initial reaction volume up to 20µl:
 - Component 1.** 10µl of diluted Active FGFR4 (N535K) (Catalog #F07-12G)
 - Component 2.** 5µl of 1 mg/ml stock solution of substrate (Catalog #P61-58)
 - Component 3.** 5µl distilled H₂O (4°C)
- Step 4.** Set up the blank control as outlined in step 3, excluding the addition of the substrate. Replace the substrate with an equal volume of distilled H₂O.
- Step 5.** Initiate the reaction by the addition of 5µl [³³P]-ATP Assay Cocktail bringing the final volume up to 25µl and incubate the mixture in a water bath at 30°C for 15 minutes.
- Step 6.** After the 15 minute incubation period, terminate the reaction by spotting 20µl of the reaction mixture onto individual pre-cut strips of phosphocellulose P81 paper.
- Step 7.** Air dry the pre-cut P81 strip and sequentially wash in a 1% phosphoric acid solution (dilute 10ml of phosphoric acid and make a 1L solution with distilled H₂O) with constant gentle stirring. It is recommended that the strips be washed a total of 3 intervals for approximately 10 minutes each.
- Step 8.** Count the radioactivity on the P81 paper in the presence of scintillation fluid in a scintillation counter.
- Step 9.** Determine the corrected cpm by removing the blank control value (see Step 4) for each sample and calculate the kinase specific activity as outlined below.

Calculation of [³³P]-ATP Specific Activity (SA) (cpm/pmol)

Specific activity (SA) = cpm for 5µl [³³P]-ATP / pmoles of ATP (in 5µl of a 250µM ATP stock solution, i.e., 1250 pmoles)

Kinase Specific Activity (SA) (pmol/min/µg or nmol/min/mg)

Corrected cpm from reaction / [(SA of ³³P-ATP in cpm/pmol)*(Reaction time in min)*(Enzyme amount in µg or mg)]*[(Reaction Volume) / (Spot Volume)]

To place your order, please contact us by phone 1-(604)-232-4600, fax 1-604-232-4601 or by email: orders@signalchem.com
www.signalchem.com

FOR IN VITRO RESEARCH PURPOSES ONLY. NOT INTENDED FOR USE IN HUMAN OR ANIMALS.