

PP2A β Protein

Recombinant full-length protein expressed in Sf9 cells

Catalog # P17-34G

Lot # S370-1

Product Description

Recombinant full-length human PP2A β was expressed by baculovirus in Sf9 insect cells using an N-terminal GST tag. The gene accession number is [NM_004156](#).

Gene Aliases

PP2A-beta, PP2CB; PPP2CB

Formulation

Recombinant protein stored in 50mM Tris-HCl, pH 7.5, 150mM NaCl, 10mM glutathione, 0.1mM EDTA, 0.25mM DTT, 0.1mM PMSF, 25% glycerol.

Storage and Stability

Store product at -70°C . For optimal storage, aliquot target into smaller quantities after centrifugation and store at recommended temperature. For most favorable performance, avoid repeated handling and multiple freeze/thaw cycles.

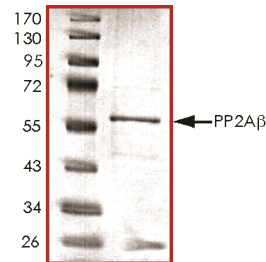
Scientific Background

PP2A is one of the four major Ser/Thr phosphatases which are implicated in the negative control of cell growth and division and encodes a specific phosphotyrosyl phosphatase activator of the dimeric form of protein phosphatase 2A (1). PP2A holoenzymes are heterotrimeric proteins composed of a structural subunit A, a catalytic subunit C, and a regulatory subunit B which is encoded by a diverse set of genes. The interaction was independent of ATP or magnesium ion and the inclusion of PTPA altered the substrate specificity of PP2A, with enhanced phosphotyrosine phosphatase activity and decreased phosphoserine phosphatase activity (2).

References

1. Van Hoof, C. et.al: Structure and chromosomal localization of the human gene of the phosphotyrosyl phosphatase activator (PTPA) of protein phosphatase 2A. *Genomics* 28: 261-272, 1995.
2. Chao, Y. et.al: Structure and mechanism of the phosphotyrosyl phosphatase activator. *Molec. Cell* 23: 535-546, 2006.

Purity



The purity of PP2A β was determined to be **>75%** by densitometry. Approx. MW **59 kDa**.

PP2A β Protein

Recombinant full-length protein expressed in Sf9 cells

Catalog Number	P17-34G
Specific Lot Number	S370-1
Purity	>75%
Concentration	0.1 µg/µl
Stability	1yr At -70°C from date of shipment
Storage & Shipping	Store product at -70°C . For optimal storage, aliquot target into smaller quantities after centrifugation and store at recommended temperature. For most favorable performance, avoid repeated handling and multiple freeze/thaw cycles. Product shipped on dry ice.

To place your order, please contact us by phone 1-(604)-232-4600, fax 1-604-232-4601 or by email: orders@signalchem.com
www.signalchem.com

FOR IN VITRO RESEARCH PURPOSES ONLY. NOT INTENDED FOR USE IN HUMAN OR ANIMALS.