

## ENPP2 Protein

Recombinant human protein expressed in Sf9 cells

**Catalog # E22-35G**

Lot # S202-3

### Product Description

Recombinant human ENPP2 (36-end) was expressed by baculovirus in Sf9 insect cells using an N-terminal GST tag. The gene accession number is [BC034961](#).

### Gene Aliases

ATX, ATX-X, AUTOTAXIN, LysoPLD, NPP2, PD-IALPHA, SMG1

### Formulation

Recombinant protein stored in 50mM Tris-HCl, pH 7.5, 50mM NaCl, 10mM glutathione, 0.1mM EDTA, 0.25mM DTT, 0.1mM PMSF, 25% glycerol.

### Storage and Stability

Store product at  $-70^{\circ}\text{C}$ . For optimal storage, aliquot target into smaller quantities after centrifugation and store at recommended temperature. For most favorable performance, avoid repeated handling and multiple freeze/thaw cycles.

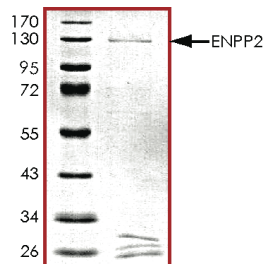
### Scientific Background

ENPP2 functions as both a phosphodiesterase, which cleaves phosphodiester bonds at the 5' end of oligonucleotides, and a phospholipase, which catalyzes production of lysophosphatidic acid (LPA) in extracellular fluids which evokes growth factor-like responses including stimulation of cell proliferation and chemotaxis. It also may induce parturition (1). ENPP2 stimulates the motility of tumor cells and has angiogenic properties, and its expression is upregulated in several kinds of carcinomas (2).

### References

1. Tokumura, A. et.al: Identification of human plasma lysophospholipase D, a lysophosphatidic acid-producing enzyme, as autotaxin, a multifunctional phosphodiesterase. *J. Biol. Chem.* 277: 39436-39442, 2002.
2. Murata, J. et.al: cDNA cloning of human tumor motility-stimulating protein, autotaxin, reveals a homology with phosphodiesterases. *J. Biol. Chem.* 269: 30479-30484, 1994.

### Purity



The purity of ENPP2 was determined to be **>70%** by densitometry. Approx. MW **126kDa**.

## ENPP2 Protein

Recombinant human protein expressed in Sf9 cells

Catalog Number	E22-35G
Specific Lot Number	S202-3
Purity	>70%
Concentration	0.05 µg/µl
Stability	1yr At $-70^{\circ}\text{C}$ from date of shipment
Storage & Shipping	Store product at $-70^{\circ}\text{C}$ . For optimal storage, aliquot target into smaller quantities after centrifugation and store at recommended temperature. For most favorable performance, avoid repeated handling and multiple freeze/thaw cycles. Product shipped on dry ice.

To place your order, please contact us by phone 1-(604)-232-4600, fax 1-604-232-4601 or by email: [orders@signalchem.com](mailto:orders@signalchem.com)  
[www.signalchem.com](http://www.signalchem.com)

**FOR IN VITRO RESEARCH PURPOSES ONLY. NOT INTENDED FOR USE IN HUMAN OR ANIMALS.**