

ATF2 Protein

Recombinant human protein expressed in E. coli cells

Catalog # A10-55G

Lot # R325-4

Product Description

Recombinant human ATF2 (1-254) was expressed in E. coli cells using an N-terminal GST tag. The gene accession number is [NM_001880](#).

Gene Aliases

HB16; CREB2; TREB7; CRE-BP1; MGC111558.

Formulation

Recombinant protein stored in 50mM Tris-HCl, pH 7.5, 50mM NaCl, 10mM glutathione, 0.1mM EDTA, 0.25mM DTT, 0.1mM PMSF, 25% glycerol.

Storage and Stability

Store product at -70°C. For optimal storage, aliquot target into smaller quantities after centrifugation and store at recommended temperature. For most favorable performance, avoid repeated handling and multiple freeze/thaw cycles.

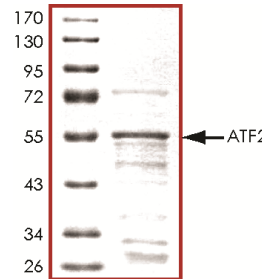
Scientific Background

Activating transcription factor (ATF)-2, also designated CRE-BP1, is a member of the ATF/cyclic AMP-responsive element binding protein family of transcription factors. ATF2 has two unique characteristics: it mediates the adenovirus E1A-induced trans-activation and forms a heterodimer with c-Jun (1). ATF2 is a target of the JNK signal transduction pathway (2). ATF2 is phosphorylated by JNK on two closely spaced threonine residues within the NH₂-terminal activation domain. The replacement of these phosphorylation sites with alanine inhibited the transcriptional activity of ATF2. Furthermore, p38 MAPK can also phosphorylate ATF2.

References

1. Nomura, N. et al: Isolation and characterization of a novel member of the gene family encoding the cAMP response element-binding protein CRE-BP1. *J Biol Chem.* 1993 Feb 25;268(6):4259-66.
2. Gupta, S. et al: Transcription factor ATF2 regulation by the JNK signal transduction pathway. *Science.* 1995 Jan 20;267(5196):389-93.

Purity



The purity was determined to be **>75%** by densitometry. Approx. MW **55kDa**.

Upstream Active Kinases

p38α, Active	Cat # M39-10
p38β, Active	Cat # M36-10
JNK1, Active	Cat # M33-10
JNK2, Active	Cat # M34-10
JNK3, Active	Cat # M35-10

ATF2 Protein

Recombinant human protein expressed in E. coli cells

Catalog Number **A10-55G**

Specific Lot Number **R325-4**

Purity	>75%
Concentration	0.2 µg/µl
Stability	1yr At -70°C from date of shipment
Storage & Shipping	Store product at -70°C. For optimal storage, aliquot target into smaller quantities after centrifugation and store at recommended temperature. For most favorable performance, avoid repeated handling and multiple freeze/thaw cycles. Product shipped on dry ice.

To place your order, please contact us by phone 1-(604)-232-4600, fax 1-604-232-4601 or by email: orders@signalchem.com
www.signalchem.com

FOR IN VITRO RESEARCH PURPOSES ONLY. NOT INTENDED FOR USE IN HUMAN OR ANIMALS.