

Anti-AFX

Rabbit Polyclonal Antibody

Catalog # A42-63R

Lot # R157-3

Cited Applications

- Western blot (1:500)

Ideal working dilutions for each application should be empirically determined by the investigator.

Specificity

Recognizes the AFX protein

Cross Reactivity

- Western blot human and mouse AFX

AFX from other species may also be detectable

Host

Rabbit

Immunogen

Synthetic peptide corresponding to amino acids 195-199 of human AFX

Formulation

PBS, pH7.4, 0.02%NaN₃, 50% glycerol

Stability

Store at 4°C (add 0.1% NaN₃) for several months, and at -20°C for longer periods. For optimal storage, aliquot antibody into smaller quantities after centrifugation and store at recommended temperature. For optimal performance, avoid repeated handling and multiple freeze/thaw cycles.

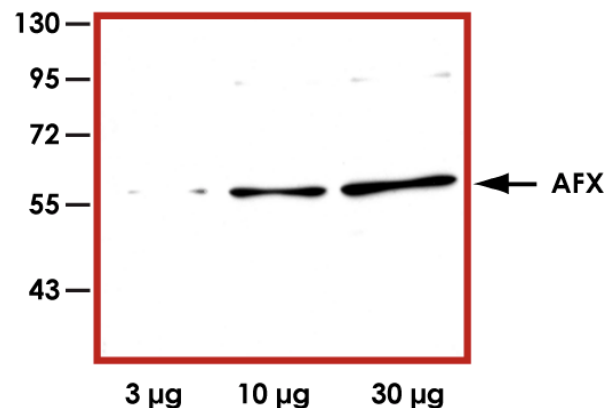
Scientific Background

AFX is a member of the O class of winged helix/forkhead transcription factor family. AFX proteins are involved in cell cycle regulation and inactivation of these proteins help in oncogenic transformation. AFX regulates apoptosis in part by suppressing the level of antiapoptotic BCLX through the transcriptional repressor BCL6 (1). AFX is down-regulated in patients with inflammatory bowel disease. AFX is expressed in human luteinized mural granulosa cells and may be involved in human folliculogenesis and luteinization. AFX acts as a novel anticancer agent for HER2-overexpressing cells.

References

1. Tang, T. et al: The forkhead transcription factor AFX activates apoptosis by induction of the BCL-6 transcriptional repressor. *J. Biol. Chem.* 277:14255-14265, 2002.

Sample Data



Representative Western blot with Anti-AFX (1:500) using 3µg, 10µg and 30µg of 3T6 cell lysate.

Anti-AFX

Rabbit Polyclonal Antibody

Catalog Number

A42-63R

Specific Lot Number

R157-3

Purification

Affinity chromatography

Concentration

1.0 µg/µL

Stability

1yr at -20°C from date of shipment

Storage & Shipping

Store product at -20°C. For optimal storage, aliquot antibody into smaller quantities after centrifugation and store at recommended temperature. For optimal performance, avoid repeated handling and multiple freeze/thaw cycles. Product shipped on ice packs.

To place your order, please contact us by phone 1-(604)-232-4600, fax 1-604-232-4601 or by email: orders@signalchem.com
www.signalchem.com

FOR IN VITRO RESEARCH PURPOSES ONLY. NOT INTENDED FOR USE IN HUMAN OR ANIMALS.