

Anti-CDC25A

Rabbit Polyclonal Antibody

Catalog # C04-63R

Lot # R133-8

Cited Applications

- Western blot (1:1000)

Ideal working dilutions for each application should be empirically determined by the investigator.

Specificity

Recognizes the CDC25A protein

Cross Reactivity

- Western blot human and mouse CDC25A

CDC25A from other species may also be detectable

Host

Rabbit

Immunogen

Synthetic peptide corresponding to amino acids 74-78 of human CDC25A

Formulation

PBS, pH 7.4, 0.02% NaN₃, 50% glycerol

Stability

Store at 4°C (add 0.1% NaN₃) for several months, and at -20°C for longer periods. For optimal storage, aliquot antibody into smaller quantities after centrifugation and store at recommended temperature. For optimal performance, avoid repeated handling and multiple freeze/thaw cycles.

Scientific Background

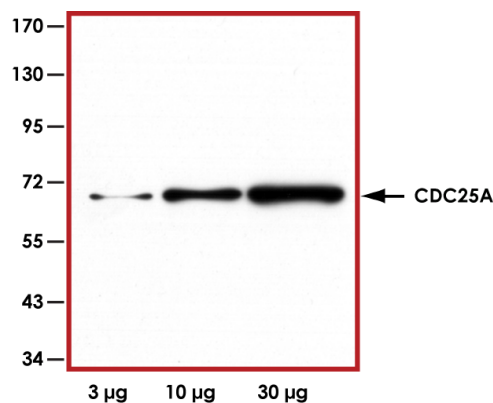
CDC25A is a member of the CDC25 family of phosphatases and is required for cell cycle progression from G1 to S phase. CDC25A activates the cyclin-dependent kinases by removing two inhibitory phosphate groups on the CDKs. CDC25A is a potential oncogene since it promotes cell division. CDC25A is over-expressed in a number of cancers and functions as an androgen receptor (AR) co-regulator suppressing the AR transcriptional activity. Human cells respond to ultraviolet light or ionizing radiation by rapid, ubiquitin- and proteasome-dependent protein degradation of CDC25A (1).

References

1. Falck, J. et al: The ATM-Chk2-Cdc25A checkpoint pathway guards against radioresistant DNA synthesis. Nature 410842-847, 2001.

To place your order, please contact us by phone 1-(604)-232-4600, fax 1-604-232-4601 or by email: orders@signalchem.com
www.signalchem.com

Sample Data



Representative Western blot with Anti-CDC25A (1:1000) using 3µg, 10µg and 30µg of Hela cell lysate.

Anti- CDC25A

Rabbit Polyclonal Antibody

Catalog Number

C04-63R

Specific Lot Number

R133-8

Purification

Affinity chromatography

Concentration

1.0 µg/µL

Stability

1yr at -20°C from date of shipment

Storage & Shipping

Store product at -20°C. For optimal storage, aliquot antibody into smaller quantities after centrifugation and store at recommended temperature. For optimal performance, avoid repeated handling and multiple freeze/thaw cycles. Product shipped on ice packs.