

Anti-STAT5

Rabbit Polyclonal Antibody

Catalog # S56-63BR

Lot # R027-9

Cited Applications

- Western blot (1:1000 dilution)

Ideal working dilutions for each application should be empirically determined by the investigator.

Specificity

Recognizes the STAT5 protein

Cross Reactivity

- Western blot STAT5 from human cells

STAT5 from other species may also be detectable

Host

Rabbit

Immunogen

Synthetic peptide corresponding to amino acids 692-696 of human STAT5 (protein accession number P42229)

Formulation

PBS pH 7.4, 0.02% sodium azide, 50% glycerol

Stability

Store at 4°C (add 0.1% NaN₃) for several months, and at -20°C for longer periods. For optimal storage, aliquot antibody into smaller quantities after centrifugation and store at recommended temperature. For optimal performance, avoid repeated handling and multiple freeze/thaw cycles.

Scientific Background

STAT5 (signal transducers and activators of transcription 5) is a member of the STAT family. It is phosphorylated by receptor associated protein kinases in response to cytokines and growth factors (1). The differentiation of T helper cells is regulated by members of the STAT family. In BCR-ABL-positive cells, STAT5 is constitutively activated by tyrosine phosphorylation. STAT5 activation results in upregulation of Bcl-X_L and increased resistance to induction of apoptosis. STAT5 is involved in expression and growth hormone-mediated sexually dimorphic regulation of cytochrome P450 3A10/lithocholic acid 6 beta-hydroxylase (2).

References

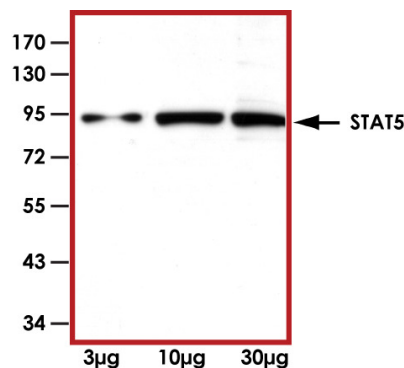
1. Wang, D. et al: Naturally occurring dominant negative variants of Stat5. *Molec. Cell Biol.* 16: 6141-6148, 1996.
2. A Subramanian et al: STAT 5 and NF- κ B are involved in expression and growth hormone-mediated sexually dimorphic regulation of cytochrome P450 3A10/lithocholic acid 6beta-hydroxylase. *Nucleic Acids Res.* 1998; 26(9): 2173-2178.

To place your order, please contact us by phone 1-(604)-232-4600, fax 1-604-232-4601 or by email: orders@signalchem.com
www.signalchem.com

Sample Data



Representative western blot with Anti-STAT5 (1:1000) using 5 ng of human recombinant STAT1 β , STAT2, STAT3, STAT4, STAT5 and STAT6.



Representative western blot with Anti-STAT5 (1:1000) using 3 μ g, 10 μ g and 30 μ g of K562 cell lysate.

Anti-STAT5

Rabbit Polyclonal Antibody

Catalog Number

S56-63BR

Specific Lot Number

R027-9

Purification

Affinity chromatography

Concentration

1.0 μ g/ μ L

Stability

1yr at -20°C from date of shipment

Storage & Shipping

Store product at -20°C. For optimal storage, aliquot antibody into smaller quantities after centrifugation and store at recommended temperature. For optimal performance, avoid repeated handling and multiple freeze/thaw cycles. Product shipped on ice packs.