

Anti-Tubulin β

Rabbit Polyclonal Antibody

Catalog # T92-63R

Lot # R027-5

Cited Applications

- Western blot (1:1000 dilution)

Ideal working dilutions for each application should be empirically determined by the investigator.

Specificity

Recognizes the Tubulin β protein

Cross Reactivity

- Western blot Tubulin β from human and mouse cells

Tubulin β from other species may also be detectable

Host

Rabbit

Immunogen

Synthetic peptide derived from β-tubulin of many animal species

Formulation

TBS, 50% glycerol

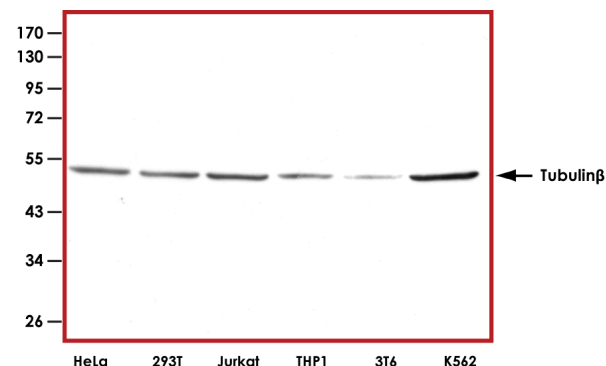
Stability

Store at 4°C (add 0.1% NaN₃) for several months, and at -20°C for longer periods. For optimal storage, aliquot antibody into smaller quantities after centrifugation and store at recommended temperature. For optimal performance, avoid repeated handling and multiple freeze/thaw cycles.

Scientific Background

TUBB1 or tubulin-beta 1 protein is a major constituent of microtubules. TUBB1 interaction with microtubule-associated proteins (MAPs) such as tau is fundamental for microtubule structure and function (1). Previous work suggested that the "microtubule binding domain" of tau (composed of three or four imperfect 18-amino acid repeats, separated by 13- or 14-amino acid inter-repeat regions) can bind to the C-terminal ends of both alpha and beta tubulin monomers. Studies revealed that TUBB1 is the target of various antitubulin agents used in the treatment of cancer. Subsequent studies have also concluded that TUBB1 mutations in clinical samples are rare, and unlikely to contribute to drug resistance (2).

Sample Data



Representative western blot with Anti-Tubulin β (1:1000) using 30 µg of HeLa, HEK-293T, Jurkat, THP1, 3T6 and K562 cell lysate.

References

1. Chau, M.F. et al: The microtubule-associated protein tau cross-links to two distinct sites on each alpha and beta tubulin monomer via separate domains. Biochemistry, 1999; 37 (51): 17692-703.
2. Berrieman, H.K. et al: Do beta-tubulin mutations have a role in resistance to chemotherapy? Lancet Oncol, 2004; 5 (3): 158-64.

Anti-Tubulin β

Rabbit Polyclonal Antibody

Catalog Number

T92-63R

Specific Lot Number

R027-5

Purification

Affinity chromatography

Concentration

1.0 µg/µL

Stability

1 yr at -20°C from date of shipment

Storage & Shipping

Store product at -20°C. For optimal storage, aliquot antibody into smaller quantities after centrifugation and store at recommended temperature. For optimal performance, avoid repeated handling and multiple freeze/thaw cycles. Product shipped on ice packs.

To place your order, please contact us by phone 1-(604)-232-4600, fax 1-604-232-4601 or by email: orders@signalchem.com
www.signalchem.com

FOR IN VITRO RESEARCH PURPOSES ONLY. NOT INTENDED FOR USE IN HUMAN OR ANIMALS.