

Vimentin Protein

Full length human recombinant protein expressed in E. coli cells

Catalog # V49-30H

Lot # Q2584-5

Product Description

Recombinant full-length human Vimentin was expressed in E. coli cells using an N-terminal His tag. The gene accession number is [NM_003380](#).

Gene Aliases

VIM, FLJ36605

Formulation

Recombinant protein stored in 50mM sodium phosphate, pH 7.0, 300mM NaCl, 150mM imidazole, 0.1mM PMSF, 2mM DTT, 25% glycerol.

Storage and Stability

Store product at -70°C. For optimal storage, aliquot target into smaller quantities after centrifugation and store at recommended temperature. For most favorable performance, avoid repeated handling and multiple freeze/thaw cycles.

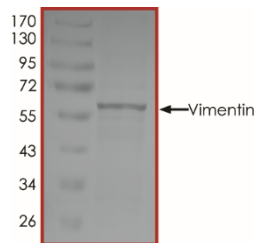
Scientific Background

Vimentin is a member of intermediate filament family of proteins and is an important structural feature of eukaryotic cells (1). Along with microtubules and actin microfilaments, Vimentin make up the cytoskeleton component of cells. Studies have shown that Vimentin is attached to the nucleus, endoplasmic reticulum and mitochondria, either laterally or terminally. Vimentin plays a significant role in supporting and anchoring the position of the organelles in the cytosol (2). Thus, Vimentin plays a key role in maintaining cell shape, integrity of the cytoplasm, and stabilizing cytoskeletal interactions.

References

1. Fuchs, E., et al: Intermediate filaments: structure, dynamics, function, and disease". Annu Rev Biochem,1994; **63**: pp. 345-82.
2. Katsumoto, T. et al: The role of the vimentin intermediate filaments in rat 3Y1 cells elucidated by immunoelectron microscopy and computer-graphic reconstruction. Biol Cell,1990; 68 (2): pp. 139-46.

Purity



The purity was determined to be **>90%** by densitometry. Approx. MW **60kDa**.

Vimentin Protein

Full length recombinant protein expressed in E. coli cells

Catalog #	V49-30H
Lot #	Q2584-5
Purity	>90%
Concentration	0.2 µg/µl
Stability	1yr at -70°C from date of shipment
Storage & Shipping	Store product at -70°C. For optimal storage, aliquot target into smaller quantities after centrifugation and store at recommended temperature. For most favorable performance, avoid repeated handling and multiple freeze/thaw cycles. Product shipped on dry ice.

To place your order, please contact us by phone 1-(604)-232-4600, fax 1-604-232-4601 or by email: orders@signalchem.com
www.signalchem.com

FOR IN VITRO RESEARCH PURPOSES ONLY. NOT INTENDED FOR USE IN HUMAN OR ANIMALS.