

p16INK4A Protein

Full-length human recombinant protein expressed in E. coli cells

Catalog # C30-30G

Lot # Q149-3

Product Description

Recombinant full-length human p16INK4A was expressed in E. coli cells using a N-terminal GST tag. The gene accession number is [NM_000077](#).

Gene Aliases

CDKN2A, ARF, MLM, p14, p16, p19, CMM2, INK4, MTS1, TP16, CDK4I, CDKN2, INK4a, p14ARF, p16INK4

Formulation

Recombinant protein stored in 50mM Tris-HCl, pH 7.5, 150mM NaCl, 10mM glutathione, 0.1mM EDTA, 0.25mM DTT, 0.1mM PMSF, 25% glycerol.

Storage and Stability

Store product at -70°C. For optimal storage, aliquot target into smaller quantities after centrifugation and store at recommended temperature. For most favorable performance, avoid repeated handling and multiple freeze/thaw cycles.

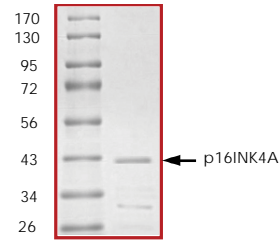
Scientific Background

p16INK4A protein family specifically inhibit cyclin-dependent kinase 4-mediated phosphorylation of the retinoblastoma (Rb) susceptibility gene product. p16INK4A, has been identified as a tumor suppressor in many human cancers and inactivation of p16INK4A in tumors is thought to be required in order for many malignant cell types to enter S-phase (1). p16INK4A expression is required for the reduction in cdk4- and cdk6-mediated Rb kinase activity observed in response to DNA damage. p16INK4A gene is frequently mutated or deleted in a wide variety of tumors, and is known to be an important tumor suppressor gene (2).

References

1. Smith-Sørensen, B. et al: CDKN2A (p16INK4A) somatic and germline mutations. Hum. Mutat. 1996; 7 (4): 294-303.
2. Kusy, S. et al: p14ARF, p15INK4b and p16INK4a methylation status in chronic myelogenous leukemia. Leuk, Lymphoma, 2005; 45 (10): 1989-94.

Purity



The purity was determined to be **>70%** by densitometry. Approx. MW **41kDa**.

p16INK4A

Full-length recombinant protein expressed in E. coli cells

Catalog #	C30-30G
Lot #	Q149-3
Purity	>70%
Concentration	0.2 µg/µl
Stability	1yr at -70°C from date of shipment
Storage & Shipping	Store product at -70°C. For optimal storage, aliquot target into smaller quantities after centrifugation and store at recommended temperature. For most favorable performance, avoid repeated handling and multiple freeze/thaw cycles. Product shipped on dry ice.

To place your order, please contact us by phone 1-(604)-232-4600, fax 1-604-232-4601 or by email: orders@signalchem.com
www.signalchem.com

FOR IN VITRO RESEARCH PURPOSES ONLY. NOT INTENDED FOR USE IN HUMAN OR ANIMALS.