

## LIMK1, Unactive

Recombinant protein expressed in Sf9 cells

Catalog # **L04-15H**

Lot # Q077-2

### Product Description

Recombinant human LIMK1 (285-638) was expressed by baculovirus in Sf9 cells using an N-terminal His tag. The gene accession number is [NM\\_002314](#).

### Gene Aliases

LIMK, KIZ

### Formulation

Recombinant protein stored in 50mM Tris-HCl, pH 7.5, 150mM NaCl, 0.25mM DTT, 0.1mM EGTA, 0.1mM EDTA, 0.1mM PMSF, 25% glycerol.

### Storage and Stability

Store product at  $-70^{\circ}\text{C}$ . For optimal storage, aliquot target into smaller quantities after centrifugation and store at recommended temperature. For most favorable performance, avoid repeated handling and multiple freeze/thaw cycles.

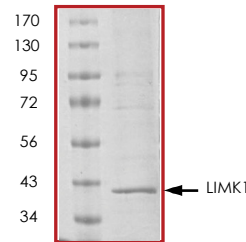
### Scientific Background

LIMK1 or LIM domain kinase 1 contains a unique combination of 2 N-terminal LIM domain and a C-terminal protein kinase domain. LIM domains are highly conserved cysteine-rich structures containing 2 zinc fingers that can bind to DNA/RNA as well as mediating protein-protein interactions (1). LIMK1 is thought to be a component of an intracellular signaling pathway that may be involved in brain development especially development of nerve cells. LIMK1 may play an important role in areas of the brain that are responsible for processing visual-spatial information (visuospatial constructive cognition). LIMK1 can regulate aspects of the cytoskeleton, the structural framework that helps to determine cell shape, size, and movement (2).

### References

1. Davila, M. et al: LIM kinase 1 is essential for the invasive growth of prostate epithelial cells: implications in prostate cancer. *J Biol Chem.* 2003;19;278(38):36868-75.
2. Davila, M. et al: Expression of LIM kinase 1 is associated with reversible G1/S phase arrest, chromosomal instability and prostate cancer. *Mol Cancer.* 2007;8;6:40.

### Purity



The purity of LIMK1 was determined to be **>85%** by densitometry. Approx. MW **41kDa**.

## LIMK1, Unactive

Recombinant protein expressed in Sf9 cells

Catalog Number **L04-15H**

Specific Lot Number **Q077-2**

Purity	>85%
Concentration	0.2 µg/µl
Stability	1yr at $-70^{\circ}\text{C}$ from date of shipment
Storage & Shipping	Store product at $-70^{\circ}\text{C}$ . For optimal storage, aliquot target into smaller quantities after centrifugation and store at recommended temperature. For most favorable performance, avoid repeated handling and multiple freeze/thaw cycles. Product shipped on dry ice.

To place your order, please contact us by phone 1-(604)-232-4600, fax 1-604-232-4601 or by email: [orders@signalchem.com](mailto:orders@signalchem.com)  
[www.signalchem.com](http://www.signalchem.com)

**FOR IN VITRO RESEARCH PURPOSES ONLY. NOT INTENDED FOR USE IN HUMAN OR ANIMALS.**