

## MEK2, Unactive

Full-length recombinant protein expressed in Sf9 cells

Catalog # M03-14G

Lot # Q005-2

### Product Description

Recombinant full-length human MEK2 was expressed by baculovirus in Sf9 insect cells using an N-terminal GST tag. The gene accession number is [NM\\_030662](#).

### Gene Aliases

MAP2K2, MKK2, PRKMK2, MAPKK2

### Formulation

Recombinant protein stored in 50mM Tris-HCl, pH 7.5, 150mM NaCl, 0.25mM DTT, 0.1mM EGTA, 0.1mM EDTA, 0.1mM PMSF, 25% glycerol.

### Storage and Stability

Store product at  $-70^{\circ}\text{C}$ . For optimal storage, aliquot target into smaller quantities after centrifugation and store at recommended temperature. For most favorable performance, avoid repeated handling and multiple freeze/thaw cycles.

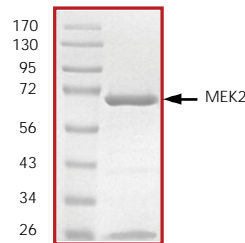
### Scientific Background

MEK2 is the member of MAPK kinase (MAPKK) family of signaling protein kinases. MEK2 is a dual-specificity kinase that activates the extracellular signal-regulated kinase (ERK) and mitogen-activated protein (MAP) kinase upon agonist binding to receptors. MEK2 plays a key role in the Ras/Raf/MEK/ERK mitogen-activated protein kinase (MAPK) signaling pathways (1). Approximately 30% of all human cancers have a constitutively activated MAPK pathway, and constitutive activation of MEK2 results in cellular transformation. The ERK/MAP kinase cascade regulates cell growth and differentiation (2).

### References

1. Shuichan, Xu et al: Differential Regulation of Mitogen-Activated Protein/ERK Kinase (MEK)1 and MEK2 and Activation by a Ras-Independent Mechanism. *Mol. Endocrinol.* 1997;11 (11): 1618-1625.
2. Louis-François, B, et al: *Mek2* Is Dispensable for Mouse Growth and Development. *Mol. Cellular Biol.* 2003; 23 (14): 4778-4787.

### Purity



The purity of MEK2 was determined to be **>90%** by densitometry, approx. MW **~71kDa**.

## MEK2, Unactive

Full-length recombinant protein expressed in Sf9 cells

Catalog Number

M03-14G

Specific Lot Number

Q005-2

Purity

>90%

Concentration

0.2  $\mu\text{g}/\mu\text{l}$

Stability

1yr At  $-70^{\circ}\text{C}$  from date of shipment

Storage & Shipping

Store product at  $-70^{\circ}\text{C}$ . For optimal storage, aliquot target into smaller quantities after centrifugation and store at recommended temperature. For most favorable performance, avoid repeated handling and multiple freeze/thaw cycles. Product shipped on dry ice.

To place your order, please contact us by phone 1-(604)-232-4600, fax 1-604-232-4601 or by email: [orders@signalchem.com](mailto:orders@signalchem.com)  
[www.signalchem.com](http://www.signalchem.com)

**FOR IN VITRO RESEARCH PURPOSES ONLY. NOT INTENDED FOR USE IN HUMAN OR ANIMALS.**