

Chaetocin

Epigenetic Enzyme Inhibitor

Catalog # K421-904C

Lot # P3320-10

CAS # 28097-03-2

Product Description

Molecular Formula: C₃₀H₂₈N₆O₆S₄

Appearance: Lyophilized solid

Melting Point: 196.1-197.8 °C

Molecular Weight: 696.9

Purity: >99%; NMR (Conforms)

Solubilization: May be dissolved in DMSO (25 mg/ml); or ethanol (25 mg/ml)

Alias

Lys methyltransferase inhibitor

Specific Activity

Lys Methyltransferase Inhibitor

Storage and Stability

Store desiccated as supplied at -20°C for up to 2 years.

Store solutions at -20°C for up to 1 month.

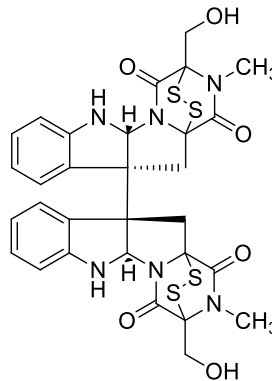
Scientific Background

Inhibits the lysine methyltransferase SU (VAR)3-91. Displays antimyeloma activity in IL-6-dependent myeloma cell lines². Cell permeable.

References

1. D Greiner et al. Nat. Chem. Biol. 2005 1:143
2. CR Isham et al. Blood 2007 109:2579

Molecular Structure



CHAETOCIN

Epigenetic Enzyme Inhibitor

| | |
|--------------------|---|
| Catalog # | K421-904C |
| CAS # | 28097-03-2 |
| Lot # | P3320-10 |
| Purity | >99% |
| Format | Lyophilized solid |
| Solubilization | May be dissolved in DMSO (25 mg/ml); or ethanol (25 mg/ml) |
| Storage & Shipping | Inhibits the lysine methyltransferase SU (VAR)3-91. Displays antimyeloma activity in IL-6-dependent myeloma cell lines ² . Cell permeable. |

To place your order, please contact us by phone 1-(604)-232-4600, fax 1-604-232-4601 or by email: orders@signalchem.com
www.signalchem.com

FOR IN VITRO RESEARCH PURPOSES ONLY. NOT INTENDED FOR USE IN HUMAN OR ANIMALS.