

CDK2 Protein

Full length recombinant protein expressed in Sf9 cells

Catalog # C29-30G

Lot # P1555-4

Product Description

Recombinant full-length human CDK2 was expressed by baculovirus in Sf9 insect cells using an N-terminal GST tag. The gene accession number is [NM_001798](#).

Gene Aliases

p33 (CDK2)

Formulation

Recombinant protein stored in 50mM Tris-HCl, pH 7.5, 50mM NaCl, 10mM glutathione, 0.1mM EDTA, 0.25mM DTT, 0.1mM PMSF, 25% glycerol.

Storage and Stability

Store product at -70°C. For optimal storage, aliquot target into smaller quantities after centrifugation and store at recommended temperature. For most favorable performance, avoid repeated handling and multiple freeze/thaw cycles.

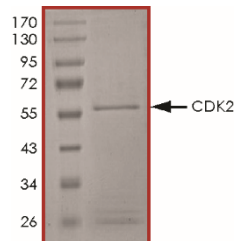
Scientific Background

CDK2 is a member of the Cyclin-Dependent Kinase family that is ubiquitously expressed. CDK2 is a catalytic subunit of the cyclin-dependent protein kinase complex, whose activity is restricted to the G1-S phase, and essential for cell cycle G1/S phase transition. CDK2 associates with and is regulated by the regulatory subunits of the complex including Cyclin A or E, CDK inhibitor p21Cip1 (CDKN1A) and p27Kip1 (CDKN1B) (1). CDK2 phosphorylates multiple cellular substrates including SMAD3 and FOXO1. Phosphorylation of FOXO1 leads to its inhibition (2).

References

- Levkau, B. et al: Cleavage of p21 (Cip1/Waf1) and p27 (Kip1) mediates apoptosis in endothelial cells through activation of Cdk2: role of a caspase cascade. *Molec. Cell* 1: 553-563, 1998.
- Huang, H. et al: CDK2-dependent phosphorylation of FOXO1 as an apoptotic response to DNA damage. *Science* 314: 294-297, 2006.

Purity



The purity of CDK2 was determined to be **>80%** by densitometry. Approx. MW **~58kDa**.

CDK2

Full length recombinant protein expressed in Sf9 cells

Catalog #	C29-30G
Lot #	P1555-4
Purity	>80%
Concentration	0.05 µg/µl
Stability	1yr at -70°C from date of shipment
Storage & Shipping	Store product at -70°C. For optimal storage, aliquot target into smaller quantities after centrifugation and store at recommended temperature. For most favorable performance, avoid repeated handling and multiple freeze/thaw cycles. Product shipped on dry ice.

To place your order, please contact us by phone 1-(604)-232-4600, fax 1-604-232-4601 or by email: orders@signalchem.com
www.signalchem.com

FOR IN VITRO RESEARCH PURPOSES ONLY. NOT INTENDED FOR USE IN HUMAN OR ANIMALS.