

KAT3A (CREBBP) Protein

Recombinant human protein expressed in Sf9 cells

Catalog # K312-31G

Lot # O975-2

Product Description

Recombinant human KAT3A (518-1207) was expressed by baculovirus in Sf9 insect cells using an N-terminal GST tag. The gene accession number is [NM_004380](#).

Gene Aliases

CREBBP; CBP; KAT3A; RSTS

Formulation

Recombinant protein stored in 50mM Tris-HCl, pH 7.5, 150mM NaCl, 10mM glutathione, 0.1mM EDTA, 0.25mM DTT, 0.1mM PMSF, and 25% glycerol.

Storage and Stability

Store product at -70°C. For optimal storage, aliquot target into smaller quantities after centrifugation and store at recommended temperature. For most favorable performance, avoid repeated handling and multiple freeze/thaw cycles.

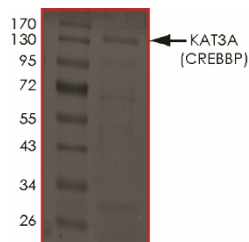
Scientific Background

KAT3A has intrinsic histone acetyltransferase activity that acts as a scaffold to stabilize additional protein interactions with the transcription complex and acetylates both histone and non-histone proteins. KAT3A (CREBBP) expressed as a nuclear protein that binds to cAMP-response element binding protein (CREB) and involved in the transcriptional coactivation of many different transcription factors. KAT3A plays a main role in embryonic development, growth control, and homeostasis by coupling chromatin remodeling to transcription factor recognition (1). KAT3A also plays a critical role in the transmission of inductive signals from cell surface receptors to the transcriptional apparatus (2).

References

1. Arias, J. et.al: Activation of cAMP and mitogen responsive genes relies on a common nuclear factor. Nature 370: 226-229, 1994.
2. Kasper, L. H. et.al: A transcription-factor-binding surface of coactivator p300 is required for haematopoiesis. Nature 419: 738-743, 2002.

Purity



The purity of KAT3A (CREBBP) was determined to be **>75%** by densitometry. Approx. MW **140kDa**.

KAT3A (CREBBP) Protein

Recombinant human protein expressed in Sf9 cells

Catalog #	K312-31G
Lot #	O975-2
Purity	>75%
Concentration	0.1 µg/µl
Stability	1yr at -70°C from date of shipment
Storage & Shipping	Store product at -70°C. For optimal storage, aliquot target into smaller quantities after centrifugation and store at recommended temperature. For most favorable performance, avoid repeated handling and multiple freeze/thaw cycles. Product shipped on dry ice.

To place your order, please contact us by phone 1-(604)-232-4600, fax 1-604-232-4601 or by email: orders@signalchem.com
www.signalchem.com

FOR IN VITRO RESEARCH PURPOSES ONLY. NOT INTENDED FOR USE IN HUMAN OR ANIMALS.