

UBE2J1 Protein

Full length recombinant protein expressed in Sf9 cells

Catalog # U225-30G

Lot # O941-2

Product Description

Recombinant full-length human UBE2J1 was expressed by baculovirus in Sf9 insect cells using an N-terminal GST tag. The gene accession number is [BC013973](#).

Gene Aliases

CGI-76; HSPC153; HSPC205; HSU93243; NCUBE-1; NCUBE1; UBC6; Ubc6p

Formulation

Recombinant protein stored in 50mM Tris-HCl, pH 7.5, 50mM NaCl, 10mM glutathione, 0.1mM EDTA, 0.25mM DTT, 0.1mM PMSF, 25% glycerol.

Storage and Stability

Store product at -70°C. For optimal storage, aliquot target into smaller quantities after centrifugation and store at recommended temperature. For most favorable performance, avoid repeated handling and multiple freeze/thaw cycles.

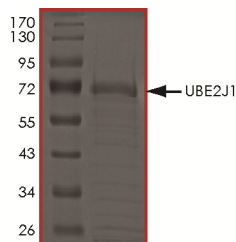
Scientific Background

UBE2J1 is a member of the E2 ubiquitin-conjugating enzyme family which is located in the membrane of the endoplasmic reticulum (ER) and may contribute to quality control ER-associated degradation by the ubiquitin-proteasome system. UBE2J1 is play an important role in the homeostatic regulation of MHC class I assembly and expression (1). HRD1 and UBE2J1 associate in a complex together with non-β2m bound MHC class I heavy chains, Derlin 1, and p97 and discriminate misfolded MHC class I from conformational MHC I-β2m-peptide heterotrimers.

References

1. Burr ML, et. al: HRD1 and UBE2J1 target misfolded MHC class I heavy chains for endoplasmic reticulum-associated degradation. Proc Natl Acad Sci U S A. 2011 Feb 1.

Purity



The purity of UBE2J1 was determined to be **>70%** by densitometry. Approx. MW **70kDa**.

UBE2J1 Protein

Full length recombinant protein expressed in Sf9 cells

Catalog #	U225-30G
Lot #	O941-2
Purity	>70%
Concentration	0.1 µg/µl
Stability	1yr at -70°C from date of shipment
Storage & Shipping	Store product at -70°C. For optimal storage, aliquot target into smaller quantities after centrifugation and store at recommended temperature. For most favorable performance, avoid repeated handling and multiple freeze/thaw cycles. Product shipped on dry ice.