

CyclinY Protein

Recombinant protein expressed in Sf9 cells

Catalog # C87-30G

Lot # O797-2

Product Description

Recombinant human CyclinY (2-end) was expressed by baculovirus in Sf9 insect cells using an N-terminal GST tag. The gene accession number is [NM_145012](#).

Gene Aliases

CCNY; C10orf9; CBCP1; CCNX; CFP1

Formulation

Recombinant protein stored in 50mM Tris-HCl, pH 7.5, 50mM NaCl, 10mM glutathione, 0.1mM EDTA, 0.25mM DTT, 0.1mM PMSF, 25% glycerol.

Storage and Stability

Store product at -70°C. For optimal storage, aliquot target into smaller quantities after centrifugation and store at recommended temperature. For most favorable performance, avoid repeated handling and multiple freeze/thaw cycles.

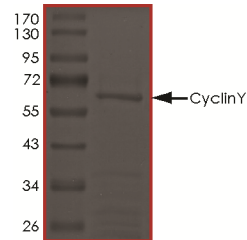
Scientific Background

Cyclin Y belongs to the highly conserved cyclin family. The members of the cyclin family are characterized by a dramatic periodicity in protein abundance through the cell cycle. Cyclin Y plays an important role in the processes of transcription, DNA repair, and cell cycle progression. Cyclin Y regulates cyclin-dependent kinases (1). Cyclin Y is an isoform of CCNY that is also known as CFP1 variant A which has a calculated molecular mass of 36.9 kD. (2). Cyclin Y specifically activates transcription through the MYC promoter.

References

- Li, X. et.al: Identification and characterization of cyclin X which activates transcriptional activities of c-Myc. Molec. Biol. Rep. 36: 97-103, 2009.
- Myc. Molec. Biol. Rep. 36: 97-103, 2009. Deloukas, P. et.al: DNA sequence and comparative analysis of human chromosome 10. Nature 429: 151-157, 2004.

Purity



The purity of CyclinY was determined to be **>80%** by densitometry. Approx. MW **65kDa**.

CyclinY Protein

Recombinant protein expressed in Sf9 cells

Catalog Number	C87-30G
Specific Lot Number	O797-2
Purity	>80%
Concentration	0.1 µg/µl
Stability	1yr at -70°C from date of shipment
Storage & Shipping	Store product at -70°C. For optimal storage, aliquot target into smaller quantities after centrifugation and store at recommended temperature. For most favorable performance, avoid repeated handling and multiple freeze/thaw cycles. Product shipped on dry ice.

To place your order, please contact us by phone 1-(604)-232-4600, fax 1-604-232-4601 or by email: orders@signalchem.com
www.signalchem.com

FOR IN VITRO RESEARCH PURPOSES ONLY. NOT INTENDED FOR USE IN HUMAN OR ANIMALS.