

## Anti-TSC2

Rabbit Polyclonal Antibody

**Catalog # T72-363R**

Lot # O2361-56

### Cited Applications

E, WB

*Ideal working dilutions for each application should be empirically determined by the investigator.*

### Specificity

Recognizes the TSC2 protein

### Cross Reactivity

Human and Mouse

### Host/Isotype/Clone#

Rabbit, IgG

### Immunogen

TSC2 antibody was raised against a 15 amino acid synthetic peptide from near the carboxy terminus of human TSC2

### Formulation

PBS + 0.02% sodium azide.

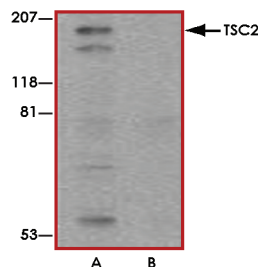
### Stability

1yr at -20°C from date of shipment.

### References

1. Shamji AF et al: Integration of growth factor and nutrient signaling: implications for cancer biology. *Mol. Cell* 2003; 12:271-80.
2. Inoki K et al: Signaling by target of rapamycin proteins in cell growth control. *Microbiol. Mol. Biol. Rev.* 2005; 69:79-100.
3. Tabancay Jr AP et al: Identification of dominant negative mutants of Rheb GTPase and their use to implicate the involvement of human Rheb in the activation of p70S6K. *J. Biol. Chem.* 2003; 278:39921-30.
4. Inoki K et al: Rheb GTPase is a direct target of TSC2 GAP activity and regulates mTOR signaling. *Genes Dev.* 2003; 17:1829-34.

### Sample Data



Western blot analysis of TSC2 in L1210 cell lysate with TSC2 antibody at 1 µg/mL in the (A) absence and (B) presence of blocking peptide.

## Anti-TSC2

Rabbit Polyclonal Antibody

Catalog Number

**T72-363R**

Specific Lot Number

**O2361-56**

Purification

Affinity chromatography

Stability

1yr at -20°C from date of shipment

Storage & Shipping

Store product at -20°C. For optimal storage, aliquot antibody into smaller quantities after centrifugation and store at recommended temperature. For optimal performance, avoid repeated handling and multiple freeze/thaw cycles. Product shipped on ice packs.

To place your order, please contact us by phone 1-(604)-232-4600, fax 1-604-232-4601 or by email: [orders@signalchem.com](mailto:orders@signalchem.com)  
[www.signalchem.com](http://www.signalchem.com)

**FOR IN VITRO RESEARCH PURPOSES ONLY. NOT INTENDED FOR USE IN HUMAN OR ANIMALS.**