

Anti-TRAF3

Rabbit Polyclonal Antibody

Catalog # T58-363BR

Lot # O2361-53

Cited Applications

E, WB, ICC

Ideal working dilutions for each application should be empirically determined by the investigator.

Specificity

Recognizes the TRAF3 protein

Cross Reactivity

Human, Mouse and Rat

Host/Isotype/Clone#

Rabbit, IgG

Immunogen

TRAF3 antibody was raised against a 15 amino acid synthetic peptide from near the amino terminus of human TRAF3

Formulation

PBS + 0.02% sodium azide.

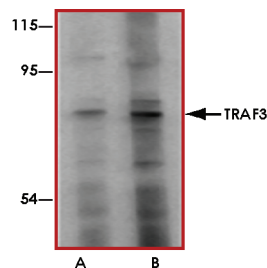
Stability

1yr at -20°C from date of shipment.

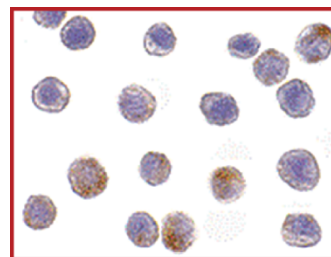
References

1. Arch RH et al: Tumor necrosis factor receptor-associated factors (TRAFs) - a family of adaptor proteins that regulate life and death. *Genes Dev.* 1998; 12:2821-30.
2. Cheng G et al: Involvement of CRAF1, a relative of CRAF, in CD40 signaling. *Science* 1995; 267:1494-8.
3. Mosialos G et al: The Epstein-Barr virus transforming protein LMP1 engages signaling proteins for the tumor necrosis factor receptor family. *Cell* 1995; 80:389-99.
4. van Eyndhoven WG et al: TRAF-3 mRNA splice-deletion variants encode isoforms that induce NF-κB activation. *Mol. Immunol.* 1999; 36:647-58.

Sample Data



Western blot analysis of TRAF3 in HeLa cell lysate with TRAF3 antibody at (A) 2 and (B) 4 µg/mL.



Immunocytochemistry of TRAF3 in HeLa cells with TRAF3 antibody at 10 µg/mL.

Anti-TRAF3

Rabbit Polyclonal Antibody

Catalog Number

T58-363BR

Specific Lot Number

O2361-53

Purification

Affinity chromatography

Stability

1yr at -20°C from date of shipment

Storage & Shipping

Store product at -20°C. For optimal storage, aliquot antibody into smaller quantities after centrifugation and store at recommended temperature. For optimal performance, avoid repeated handling and multiple freeze/thaw cycles. Product shipped on ice packs.

To place your order, please contact us by phone 1-(604)-232-4600, fax 1-604-232-4601 or by email: orders@signalchem.com
www.signalchem.com

FOR IN VITRO RESEARCH PURPOSES ONLY. NOT INTENDED FOR USE IN HUMAN OR ANIMALS.