

## Anti-TET3

Rabbit Polyclonal Antibody

**Catalog # T638-63R**

Lot # O2361-51

### Cited Applications

E, WB, IF

*Ideal working dilutions for each application should be empirically determined by the investigator.*

### Specificity

Recognizes the TET3 protein

### Cross Reactivity

Human

### Host/Isotype/Clone#

Rabbit, IgG

### Immunogen

TET3 antibody was raised against a 17 amino acid synthetic peptide near the carboxy terminus of human TET3

### Formulation

PBS + 0.02% sodium azide.

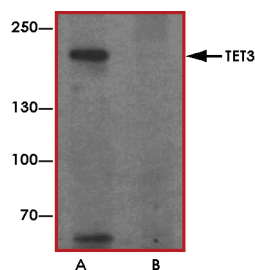
### Stability

1yr at -20°C from date of shipment.

### References

1. Howe LR et al: Activation of the MAP kinase pathway by the protein kinase raf. Cell 1992; 71:335-42.
2. Langemeijer SM et al: Acquired mutations in TET2 are common in myelodysplastic syndromes. Nat. Genet. 2009; 41:838-42.
3. Schaub FX et al: Clonal analysis of TET2 and JAK2 mutations suggests that TET2 can be a late event in the progression of myeloproliferative neoplasms. Blood 2011; 115:2003-7.
4. Langemeijer SMC et al: TET proteins in malignant hematopoiesis. Cell Cycle 2009; 4044-8.
5. Gu TP et al: The role of Tet3 DNA dioxygenase in epigenetic reprogramming by oocytes. Nature 2011; 477:606-10.

### Sample Data



Western blot analysis of TET3 in SK-N-SH cell lysate with TET3 antibody at 1 µg/ml in (A) the absence and (B) the presence of blocking peptide.

## Anti-TET3

Rabbit Polyclonal Antibody

Catalog Number

T638-63R

Specific Lot Number

O2361-51

Purification

Affinity chromatography

Stability

1yr at -20°C from date of shipment

Storage & Shipping

Store product at -20°C. For optimal storage, aliquot antibody into smaller quantities after centrifugation and store at recommended temperature. For optimal performance, avoid repeated handling and multiple freeze/thaw cycles. Product shipped on ice packs.

To place your order, please contact us by phone 1-(604)-232-4600, fax 1-604-232-4601 or by email: [orders@signalchem.com](mailto:orders@signalchem.com)  
[www.signalchem.com](http://www.signalchem.com)

**FOR IN VITRO RESEARCH PURPOSES ONLY. NOT INTENDED FOR USE IN HUMAN OR ANIMALS.**