

Anti-RIPK3

Rabbit Polyclonal Antibody

Catalog # R09-63R

Lot # O2361-50

Cited Applications

E, WB, IHC, IF

Ideal working dilutions for each application should be empirically determined by the investigator.

Specificity

Recognizes the RIPK3 protein

Cross Reactivity

Mouse and Rat

Host/Isotype/Clone#

Rabbit, IgG

Immunogen

RIPK3 antibody was raised against a peptide corresponding to amino acids 473 to 486 of murine RIPK3

Formulation

PBS + 0.02% sodium azide.

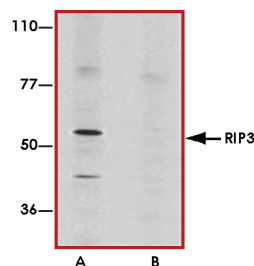
Stability

1yr at -20°C from date of shipment.

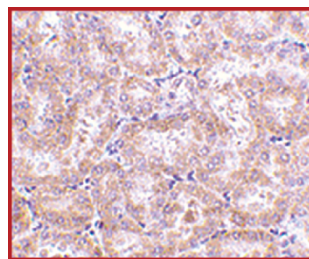
References

1. Yu PW. et al: Identification of RIP3, a RIP-like kinase that activates apoptosis and NF- κ B. *Curr Biol.* 1999;9(10):539-42.
2. Sun X et al: RIP3, a novel apoptosis-inducing kinase. *J Biol Chem.* 1999;274(24):16871-5.
3. Pazdernik NJ et al: Mouse receptor interacting protein 3 does not contain a caspase-recruiting or a death domain but induces apoptosis and activates NF- κ B. *Mol Cell Bio.* 1999; 19(10):6500-8

Sample Data



Western blot analysis of RIPK3 in mouse 3T3 whole cell lysate in the absence (A) or presence (B) of blocking peptide with RIPK3 antibody at 1 µg/mL.



Immunohistochemistry of RIPK3 in rat kidney tissue with RIPK3 antibody at 5 µg/mL.

Anti-RIPK3

Rabbit Polyclonal Antibody

Catalog Number

R09-63R

Specific Lot Number

O2361-50

Purification

Affinity chromatography

Stability

1yr at -20°C from date of shipment

Storage & Shipping

Store product at -20°C. For optimal storage, aliquot antibody into smaller quantities after centrifugation and store at recommended temperature. For optimal performance, avoid repeated handling and multiple freeze/thaw cycles. Product shipped on ice packs.

To place your order, please contact us by phone 1-(604)-232-4600, fax 1-604-232-4601 or by email: orders@signalchem.com
www.signalchem.com

FOR IN VITRO RESEARCH PURPOSES ONLY. NOT INTENDED FOR USE IN HUMAN OR ANIMALS.