

## Anti-PTK7

Rabbit Polyclonal Antibody

**Catalog # P95-63BR**

Lot # O2361-46

### Cited Applications

E, WB, IHC

*Ideal working dilutions for each application should be empirically determined by the investigator.*

### Specificity

Recognizes the PTK7 protein

### Cross Reactivity

Human, Mouse and Rat

### Host/Isotype/Clone#

Rabbit, IgG

### Immunogen

PTK7 antibody was raised against a 15 amino acid synthetic peptide from near the amino terminus of human PTK7

### Formulation

PBS + 0.02% sodium azide.

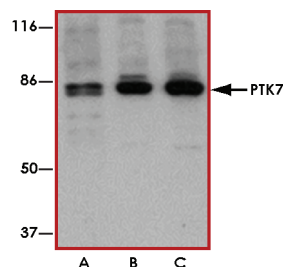
### Stability

1yr at -20°C from date of shipment.

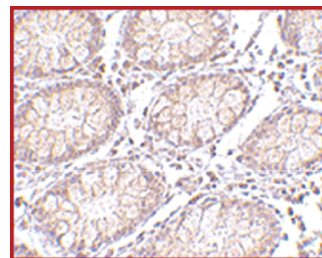
### References

1. Park SK et al: Characterization of the human full-length PTK7 cDNA encoding a receptor protein kinase-like molecule closely related to chick KLG. J. Biochem.1996; 119:235-9.
2. Lu X et al: PTK7/CCK-4 is a novel regulator of planar cell polarity in vertebrates. Nature2004; 430:93-8.
3. Easty DJ et al: Loss of expression of receptor tyrosine kinase family genes PTK7 and SEK in metastatic melanoma. Int. J. Cancer1997; 1061-5.
4. Muller-Tidow C et al: High-throughput analysis of genome-wide receptor tyrosine kinase expression in human cancers identifies potential novel drug targets. Clin. Cancer Res.2004; 10:1241-9.

### Sample Data



Western blot analysis of PTK7 in (A) human, (B) mouse and (C) rat colon tissue lysate with PTK7 antibody at 1 µg/mL.



Immunohistochemistry of PTK7 in human colon tissue with PTK7 antibody at 5 µg/mL.

## Anti-PTK7

Rabbit Polyclonal Antibody

Catalog Number

P95-63BR

Specific Lot Number

O2361-46

Purification

Affinity chromatography

Stability

1yr at -20°C from date of shipment

Storage & Shipping

Store product at -20°C. For optimal storage, aliquot antibody into smaller quantities after centrifugation and store at recommended temperature. For optimal performance, avoid repeated handling and multiple freeze/thaw cycles. Product shipped on ice packs.

To place your order, please contact us by phone 1-(604)-232-4600, fax 1-604-232-4601 or by email: [orders@signalchem.com](mailto:orders@signalchem.com)  
[www.signalchem.com](http://www.signalchem.com)

**FOR IN VITRO RESEARCH PURPOSES ONLY. NOT INTENDED FOR USE IN HUMAN OR ANIMALS.**