

## Anti-PLAC1

Rabbit Polyclonal Antibody

**Catalog # P38-363R**

Lot # O2361-41

### Cited Applications

E, WB, ICC, IF

*Ideal working dilutions for each application should be empirically determined by the investigator.*

### Specificity

Recognizes the PLAC1 protein

### Cross Reactivity

Human

### Host/Isotype/Clone#

Rabbit, IgG

### Immunogen

PLAC1 antibody was raised against a 15 amino acid synthetic peptide near the carboxy terminus of human PLAC1

### Formulation

PBS + 0.02% sodium azide.

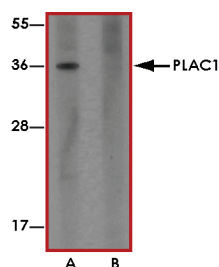
### Stability

1yr at -20°C from date of shipment.

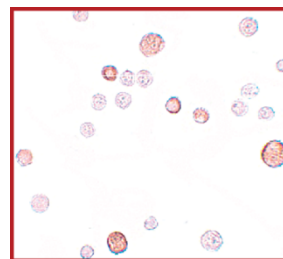
### References

1. Cocchia M et al: PLAC1, an Xq26 gene with placenta-specific expression. *Genomics*2000; 68:305-12.
2. Koslowski M et al: A placenta-specific gene ectopically activated in many human cancers is essentially involved in malignant cell processes. *Cancer Res.*2007; 67:9528-34.
3. Fant M et al: PLAC1, a trophoblast-specific gene, is expressed throughout pregnancy in the human placenta and modulated by keratinocyte growth factor. *Mol. Reprod. Dev.*2002; 63:430-6.

### Sample Data



Western blot analysis of PLAC1 in human placenta tissue lysate with PLAC1 antibody at 1 µg/mL in (A) the absence and (B) the presence of blocking peptide.



Immunocytochemistry of PLAC1 in HeLa cells with PLAC1 antibody at 10 µg/mL.

## Anti-PLAC1

Rabbit Polyclonal Antibody

Catalog Number

**P38-363R**

Specific Lot Number

**O2361-41**

Purification

Affinity chromatography

Stability

1yr at -20°C from date of shipment

Storage & Shipping

Store product at -20°C. For optimal storage, aliquot antibody into smaller quantities after centrifugation and store at recommended temperature. For optimal performance, avoid repeated handling and multiple freeze/thaw cycles. Product shipped on ice packs.

To place your order, please contact us by phone 1-(604)-232-4600, fax 1-604-232-4601 or by email: [orders@signalchem.com](mailto:orders@signalchem.com)  
[www.signalchem.com](http://www.signalchem.com)

**FOR IN VITRO RESEARCH PURPOSES ONLY. NOT INTENDED FOR USE IN HUMAN OR ANIMALS.**