

Anti-IKK epsilon

Rabbit Polyclonal Antibody

Catalog # I04-63R

Lot # O2361-27

Cited Applications

E, WB, IHC

Ideal working dilutions for each application should be empirically determined by the investigator.

Specificity

Recognizes the IKK epsilon protein and it has no cross response to IKKα, IKKβ, or IKKγ

Cross Reactivity

Human

Host/Isotype/Clone#

Rabbit, IgG

Immunogen

IKK epsilon antibody was raised against a peptide corresponding to amino acids 701 to 716 of human IKK epsilon

Formulation

PBS + 0.02% sodium azide.

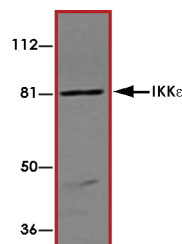
Stability

1yr at -20°C from date of shipment.

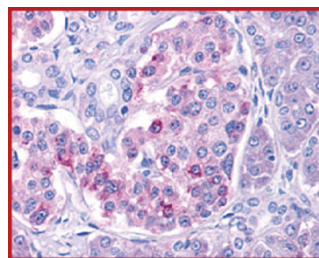
References

1. Peters RT et al: IKK epsilon is part of a novel PMA-inducible IκB kinase complex. Mol Cell 2000;5(3):513-22
2. Shimada T et al: IKK-i, a novel lipopolysaccharide-inducible kinase that is related to IκB kinases. Int Immunol 1999;11(8):1357-62.

Sample Data



Western blot analysis of IKK epsilon in Jurkat whole cell lysate with IKK epsilon/IKK-i antibody at 1 µg/mL.



Immunohistochemistry of IKK epsilon in human pancreas tissue with IKK epsilon antibody at 10 µg/mL.

Anti-IKK epsilon

Rabbit Polyclonal Antibody

Catalog Number

I04-63R

Specific Lot Number

O2361-27

Purification

Affinity chromatography

Stability

1yr at -20°C from date of shipment

Storage & Shipping

Store product at -20°C. For optimal storage, aliquot antibody into smaller quantities after centrifugation and store at recommended temperature. For optimal performance, avoid repeated handling and multiple freeze/thaw cycles. Product shipped on ice packs.

To place your order, please contact us by phone 1-(604)-232-4600, fax 1-604-232-4601 or by email: orders@signalchem.com
www.signalchem.com

FOR IN VITRO RESEARCH PURPOSES ONLY. NOT INTENDED FOR USE IN HUMAN OR ANIMALS.