

## Anti-EZH2

Rabbit Polyclonal Antibody

**Catalog # E96-363R**

Lot # O2361-26

### Cited Applications

ELISA, WB, ICC, IF

*Ideal working dilutions for each application should be empirically determined by the investigator.*

### Specificity

Recognizes the EZH2 protein and is predicted to not cross-react with EZH1

### Cross Reactivity

Human, Mouse and Rat

### Host/Isotype/Clone#

Rabbit, IgG

### Immunogen

EZH2 antibody was raised against a 17 amino acid synthetic peptide near the amino terminus of human EZH2.

### Formulation

PBS + 0.02% sodium azide.

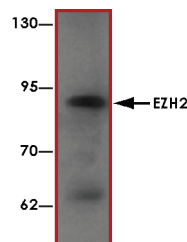
### Stability

1yr at -20°C from date of shipment.

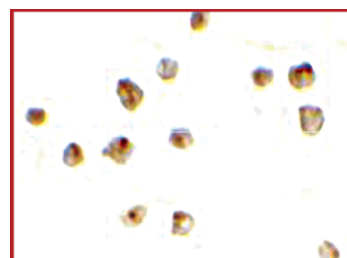
### References

1. Chen H et al: Cloning of a human homolog of the Drosophila enhancer of zeste gene (EZH2) that maps to chromosome 21q22.2. *Genomics* 1996; 38:30-7
2. Margueron R et al: Ezh1 and Ezh2 maintain repressive chromatin through different mechanisms. *Mol. Cell* 2008; 32:503-18.
3. Shen X et al: EZH1 mediates methylation on histone H3 lysine 27 and complements EZH2 in maintaining stem cell identity and executing pluripotency. *Mol. Cell* 2008; 32:491-502.
4. Ezhkova E et al: EZH1 and EZH2 cogovern histone H3K27 trimethylation and are essential for hair follicle homeostasis and wound repair. *Genes Dev.* 2011; 25:485-98.

### Sample Data



Western blot analysis of EZH2 in 293 cell lysate with EZH2 antibody at 1 ug/mL.



Immunocytochemistry of EZH2 in 293 cells with EZH2 antibody at 10 ug/mL.

## Anti-EZH2

Rabbit Polyclonal Antibody

Catalog Number

**E96-363R**

Specific Lot Number

**O2361-26**

Purification

Affinity chromatography

Stability

1yr at -20°C from date of shipment

Storage & Shipping

Store product at -20°C. For optimal storage, aliquot antibody into smaller quantities after centrifugation and store at recommended temperature. For optimal performance, avoid repeated handling and multiple freeze/thaw cycles. Product shipped on ice packs.

To place your order, please contact us by phone 1-(604)-232-4600, fax 1-604-232-4601 or by email: [orders@signalchem.com](mailto:orders@signalchem.com)

[www.signalchem.com](http://www.signalchem.com)

**FOR IN VITRO RESEARCH PURPOSES ONLY. NOT INTENDED FOR USE IN HUMAN OR ANIMALS.**