

Anti-DCAMKL3

Rabbit Polyclonal Antibody

Catalog # D16-63R

Lot # O2361-23

Cited Applications

E, WB, IF

Ideal working dilutions for each application should be empirically determined by the investigator.

Specificity

Recognizes the DCAMKL3 protein

Cross Reactivity

Human, Mouse and Rat

Host/Isotype/Clone#

Rabbit, IgG

Immunogen

DCAMKL3 antibody was raised against a 14 amino acid synthetic peptide near the amino terminus of human DCAMKL3

Formulation

PBS + 0.02% sodium azide.

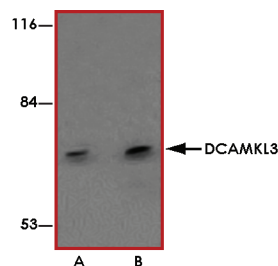
Stability

1yr at -20°C from date of shipment.

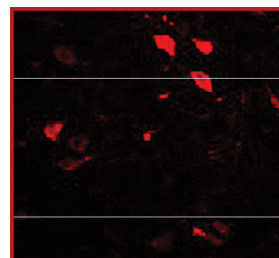
References

1. Ohmae S et al: Molecular identification and characterization of a family of kinases with homology to Ca²⁺/calmodulin-dependent protein kinases I/IV. J. Biol. Chem.2006; 281:20427-39.
2. Sossey-Alaoui K et al: DCAMKL1, a brain specific transmembrane protein on 13q12.3 that is similar to doublecortin (DCX), Genomics1999; 56:121-6.
3. Tuy FPD et al: Alternative transcripts of Dlck1 and Dlck2 and their expression in doublecortin knockout mice. Dev. Neurosci.2008; 30:171-86.
4. Reiner O et al: Missense mutations resulting in type 1 lissencephaly. Cell Mol. Life Sci.2005; 62:425-34.

Sample Data



Western blot analysis of DCAMKL3 in K562 cell lysate with DCAMKL3 antibody at (A) 1 and (B) 2 µg/mL.



Immunofluorescence of DCAMKL3 in human brain tissue with DCAMKL3 antibody at 20 µg/mL.

Anti-DCAMKL3

Rabbit Polyclonal Antibody

Catalog Number

D16-63R

Specific Lot Number

O2361-23

Purification

Affinity chromatography

Stability

1yr at -20°C from date of shipment

Storage & Shipping

Store product at -20°C. For optimal storage, aliquot antibody into smaller quantities after centrifugation and store at recommended temperature. For optimal performance, avoid repeated handling and multiple freeze/thaw cycles. Product shipped on ice packs.

To place your order, please contact us by phone 1-(604)-232-4600, fax 1-604-232-4601 or by email: orders@signalchem.com
www.signalchem.com

FOR IN VITRO RESEARCH PURPOSES ONLY. NOT INTENDED FOR USE IN HUMAN OR ANIMALS.