

Anti-BIRC2

Rabbit Polyclonal Antibody

Catalog # B279-63R

Lot # O2361-17

Cited Applications

ELISA, WB, IHC, IF

Ideal working dilutions for each application should be empirically determined by the investigator.

Specificity

Recognizes the BIRC2 protein

Cross Reactivity

Human and Mouse

Host/Isotype/Clone#

Rabbit, IgG

Immunogen

BIRC2 antibody was raised against a synthetic peptide corresponding to 14 amino acids at the C-terminus of human BIRC2

Formulation

PBS + 0.02% sodium azide.

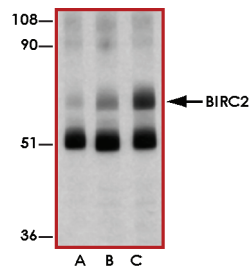
Stability

1yr at -20°C from date of shipment.

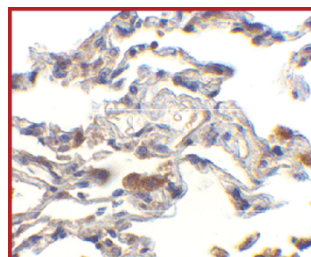
References

1. Schimmer AD. Inhibitor of apoptosis proteins: translating basic knowledge into clinical practice. *Cancer Res.* 2004; 64:7183-90.
2. Rothe M et al: The TNFR2-TRAF signaling complex contains two novel proteins related to baculoviral inhibitor of apoptosis proteins. *Cell* 1995; 83:1243-52.
3. Deveraux QL et al: IAPs block apoptotic events induced by caspase-8 and cytochrome c by direct inhibition of distinct caspases. *EMBO J.* 1998; 17:2215-23.
4. Li X et al: TNF-RII and c-IAP1 mediate ubiquitination and degradation of TRAF 2. *Nature* 2002; 416:345-7.

Sample Data



Western blot analysis of BIRC2 in human lung lysate with BIRC2 antibody at 1 (lane A), 2 (lane B), and 4 (lane C) µg/mL, respectively.



Immunohistochemistry of cIAP in human lung cells with BIRC2 antibody at 10 µg/mL.

Anti-BIRC2

Rabbit Polyclonal Antibody

Catalog Number

B279-63R

Specific Lot Number

O2361-17

Purification

Affinity chromatography

Stability

1yr at -20°C from date of shipment

Storage & Shipping

Store product at -20°C. For optimal storage, aliquot antibody into smaller quantities after centrifugation and store at recommended temperature. For optimal performance, avoid repeated handling and multiple freeze/thaw cycles. Product shipped on ice packs.

To place your order, please contact us by phone 1-(604)-232-4600, fax 1-604-232-4601 or by email: orders@signalchem.com

www.signalchem.com

FOR IN VITRO RESEARCH PURPOSES ONLY. NOT INTENDED FOR USE IN HUMAN OR ANIMALS.